

# PUBLIC AUCTION

the **Frank** **FTD**

TOOL  
& DIE CO. LTD  
EST. 1952

60 Presses, Toolroom & Material Handling  
Equipment

1030 Heritage Rd., Burlington, Ontario



UP TO 400 TON

AIDA 110 TON PRESS



60 PRESSES AVAILABLE

VERSON 200 TON PRESS



49" X 44"

2,000 RPM

STANKO MODEL 2620B HORIZONTAL BORING MILL



MODEL S20

HYD-MECH HORIZONTAL BANDSAW



45TON X 10'

ALLSTEEL MODEL 4310 PRESS BRAKE

**Auction: Wednesday June 1, 10:30AM (ET)**

**Inspection: Tuesday May 31, 9 AM to 4 PM**

**Bid Live Onsite  
& Online Via  
BidSpotter.com**



**INFINITY**  
Asset Solutions

infinityassets.com

**AUCTIONEERS  
APPRAISERS • FINANCIERS**  
*...and a lot more!*

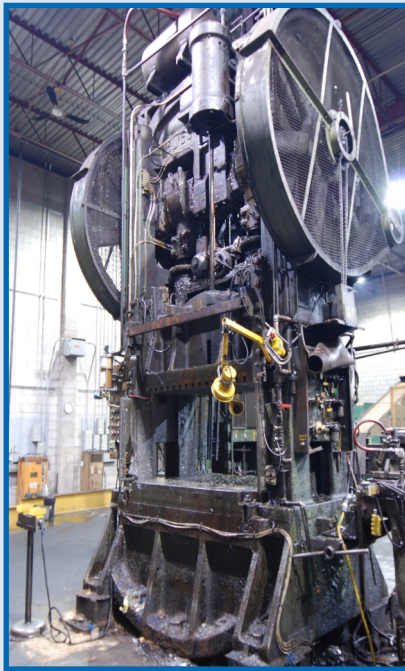
63 Maplecrete Road, Concord, Ontario L4K 1A5 Canada  
Tel: (905) 669-8893 • Fax: (905) 669-7512

# 60 PRESSES UP TO 400 TON

## PRESSES



TOLEDO 400 TON PRESS



BLISS 400 TON PRESS



LAKE ERIE 300 TON PRESS

**Toledo** model 96B 400 Ton Press, 63"Lx51"W Bed, 8" Stroke

**Bliss** model 9A 400 Ton Press, 72"Lx52"W Bed

**Lake Erie** 300 Ton Press, s/n 2800, 60"Lx24"W Bed

**Blow** 250 Ton Press

**TOS** model LE250C 250 Ton Press, s/n 230203, 44"Lx29"W Bed, 110" Adj., 45 Strokes/min

**Brown Boggs** model 480-76 250 Ton Press, s/n 10370

**Bliss** model 20 200 Ton Press, s/n H34317.HP18021, 52"Lx36"W Bed

**Bliss** model S2-200-72-48 200 Ton Press, s/n 45495, 74"Lx48"W Bed

**Bliss** model S2-200-72-42 200 Ton Press, s/n T35541, 72"Lx42"W Bed, 21" Shut Height

**Verson** model 200-S2-72 200 Ton Press, s/n 6981, 72"Lx51"W Bed, 8" Stroke, 25" Shut Height, 10" Adj.

**Williams & White** model S1-200-34-28 200 Ton Press, s/n C-4196, 34"Lx28"W Bed, 4" Stroke, 18" Shut Height, 4" Adj.

**South Bend—Johnson Presses** model SS-200-72-48 200 Ton Press, s/n 77027, 72"Lx48"W Bed, 8" Stroke, 30" Shut Height, 6" Adj., 45 Strokes/min

**Clearing** model F-4200-72 200 Ton Press, s/n 50-16627P1, 72"Lx54"W Bed, 12" Stroke, 36" Shut Height, 6" Adj., 33 Strokes/min

**Warco** 200 Ton Press, s/n 662128-10P

**Danly** model T-KNEE 150 Ton Press, s/n 15053031165, 52"Lx34"W Bed

**Blow** model 80.B Ridgid 125 Ton Press, s/n 8006, 44"Lx30"W Bed



BLOW 250 TON PRESS



TOS 250 TON PRESS



BROWN BOGGS 250 TON PRESS



1 OF 3

BLISS 200 TON PRESS



VERSON 200 TON PRESS

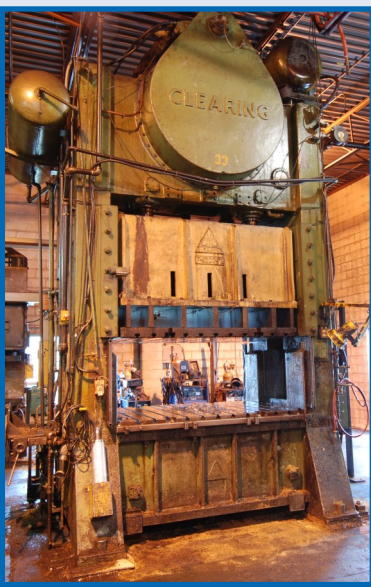


WILLIAMS & WHITE 200 TON PRESS

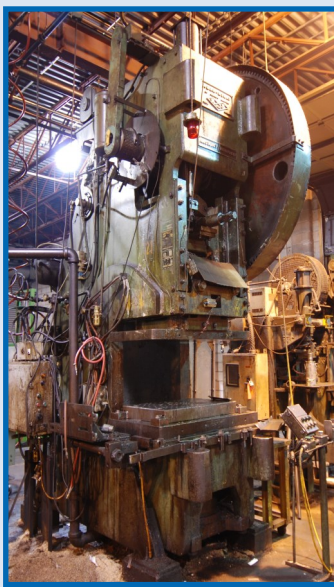
Visit [infinityassets.com](http://infinityassets.com) to view complete specs & additional photos



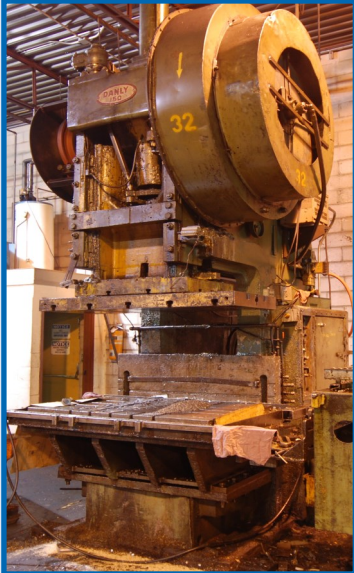
**SOUTH BEND 200 TON PRESS**



**CLEARING 200 TON PRESS**



**WARCO 200 TON PRESS**



**DANLY 150 TON PRESS**



**BLOW 125 TON PRESS**



**AIDA 110 TON PRESS**



**1 OF 2**

**BLOW 100 TON PRESS**



**SCOTTISH 100 TON PRESS**



**VERSON 90 TON PRESS**

**Aida** model C-100-165 110 Ton Press, s/n PP-XGC-100SU(II), 44"Lx22"W Bed, 6.69" Stroke, 2.95" Adj., 50 Strokes/min

**Blow** model 7 100 Ton Press, s/n S-7071AC, 39"Lx24"W Bed

**Blow** model 7 100 Ton Press, s/n 7065, 38"Lx24"W Bed

**Scottish** 100 Ton Press, 42"Lx30"W Bed

**Verson** model 7 90 Ton Press, s/n 18292, 36"Lx24"W Bed, 6" Stroke, 15" Shut Height, 3" Adj.

**Minster** model G1-75 75 Ton Press, s/n G1-75-12825, 36"Lx24"W Bed

**Minster** model G1-75 75 Ton Press, s/n G1-75-124110, 36"Lx24"W Bed, 6" Stroke, 17-1/2" Shut Height, 4" Adj., 90 Strokes/min

**Clearing** model 75 75 Ton Press, 36"Lx24"W Bed

**Blow** model 7 70 Ton Press

**Bliss** model 6A 70 Ton Press, s/n H5657/HP8320

**Minster** model 6 60 Ton Press, s/n 6-9438-C, 32"Lx21"W Bed

**Bliss** model 42M 60 Ton Press, s/n H23629/EP4825, 33"Lx26"W Bed

**Bliss** model 42 60 Ton Press, s/n H-23623/HP4826, 33"Lx26"W Bed

**Legnani** model FNGV 60 Ton Press, s/n 6-8511, 24"Lx18"W Bed

**Brown Boggs** model 17 1/2J 60 Ton Press, s/n 12720, 32"Lx23"W Bed

**U.S.I. Clearing** model 607630-184(Torc-Pak) 60 Ton Press, s/n 57-8651, 38"Lx27"W, 7" Stroke, 18" Shut Height, 5" Adj., 45 Strokes/min

**Toledo** 56 Ton Press, s/n 26004, ORDER #M60391, 30"Lx16"W Bed

**Toledo** 56 Ton Press, s/n 26005, ORDER #60691, 28"Lx20"W

(2) **U.S.I. Clearing** model AB-50-H 50 Ton Press, s/n 54-2195, 54-1454, 36"Lx24"W Bed, 8" Stroke, 23" Shut Height, 3" Adj., 60 Strokes/min, Light Curtains



1 OF 2

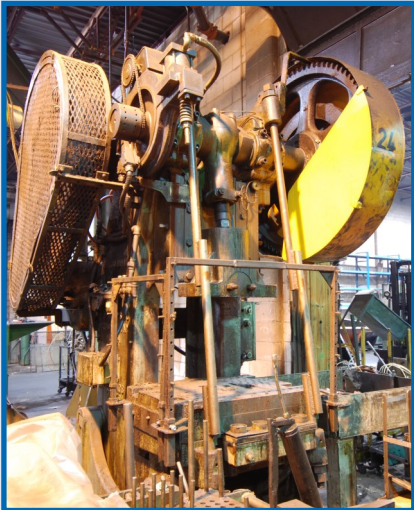
MINSTER 75 TON PRESS



CLEARING 75 TON PRESS



BLOW 70 TON PRESS



BLISS 70 TON PRESS



MINSTER 60 TON PRESS



1 OF 2

BLISS 60 TON PRESS



U.S.I. CLEARING 60 TON PRESS



1 OF 10

U.S.I. CLEARING 50 TON PRESS



B&B 60 TON PRESS



1 OF 2

TOLEDO 56 TON PRESS

(6) **U.S.I. Clearing** model AB-50-H 50 Ton Press, s/n 54-1464, 54-2193, 54-2178, 54-2187, 54-1455, 54-2181, 44"Lx32"W Bed, 8" Stroke, 23" Shut Height, 3" Adj., 60 Strokes/min

(2) **U.S.I. Clearing** model AB-50-H 50 Ton Press, 36"Lx24"W Bed

**Brown Boggs** model 16L 50 Ton Press, 31"Lx20"W Bed

**Brown Boggs** model 16LS 50 Ton Press, s/n 9454

**Niagara** model AB50 50 Ton Press, s/n 40107, 36"Lx24"W Bed, 8" Stroke, 14/24" Shut Height, 4" Adj., 50 Strokes/min

**Minster** model 5 45 Ton Press, s/n S-18994, 28"Lx18"W Bed, 3" Stroke, 10-3/4" Shut Height, 2-3/4" Adj., 90 Strokes/min, Bolster Size 8-1/2"

**U.S.I. Clearing—Torc. Pak.** 45 Ton Press, s/n 57-7431, 28"Lx23"W, 4" Stroke, 12" Shut Height, 2-1/2" Adj., 100 Strokes/min

**Rouselle** model 4 40 Ton Press, s/n 25085, 26"Lx18"W Bed, 4" Stroke, 11" Shut Height, 3-1/2" Adj., 105 Strokes/min

(2) **Brown Boggs** model 15L 40 Ton Press, s/n S738, 3180, 28-1/2"Lx18"W Bed

**V&O** 35 Ton Press, s/n 35ST-3, 27"Lx18"W Bed

**V&O** model 2 22 Ton Press, s/n 20210

**Perkins Machine Co.** model 1-A 5 Ton Rotary Press, s/n 28504, 13"Lx6"W Bed, 2-1/2" Stroke, 6-1/2" Shut Height, 1-1/4" Adj., 1" Shank

**Bliss** model H12154 Press, s/n 5030392, 84"Lx42"W Bed

**L&J** model 5 Press, s/n 723, 29"Lx18"W Bed

**Brown Boggs** model 13L Press  
**Buffalo** No. 22 Press

Visit [infinityassets.com](http://infinityassets.com) to view complete specs & additional photos

**Bid Live Onsite & Online Via BidSpotter.com**



1 OF 2

BROWN BOGGS 50 TON PRESS



NIAGARA 50 TON PRESS



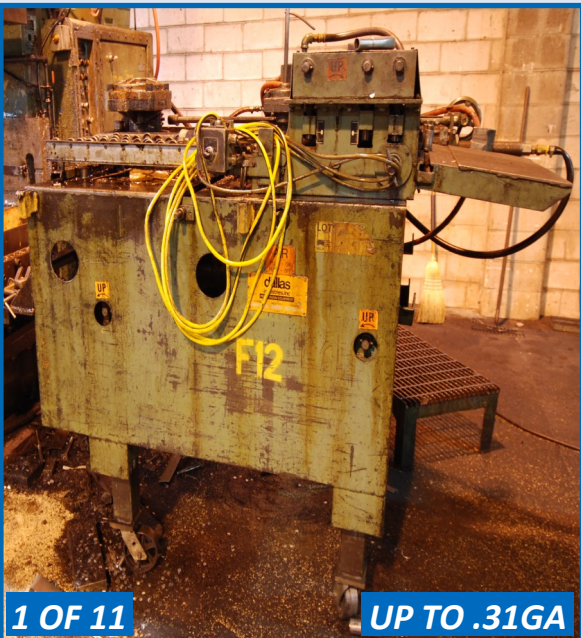
1 OF 2 45 TON PRESSES

MINSTER 45 TON PRESS



1 OF 3 40 TON PRESSES

ROUELLE 40 TON PRESS



1 OF 11

UP TO .31GA

DALLAS AIR FEEDER & STRAIGHTENER



1 OF 6

COLT AIR FEEDER & STRAIGHTENER

## AIR FEEDERS & STRAIGHTENERS

**Dallas** model D500 Air Feeder & Straightener, s/n 10959, .31GAx18"Wx18"L

(2) **Dallas** model D500 Air Feeder & Straightener, s/n 13314, 15659, .210GAx24"Wx24"L

**Dallas** model D400 Air Feeder & Straightener, s/n 12776, .200GAx18"Wx18"L

(2) **Dallas** model D325 Air Feeder & Straightener, s/n 12431, 13111, .165GAx24"Wx36"L

**Dallas** model D250 Air Feeder, s/n 10459

**Dallas** model D200 Air Feeder & Straightener, 18"Wx18"L

**Dallas** model D200 Air Feeder, s/n 15347, .060GAx24"Wx24"L (Parts Only)

**Dallas/Bratton Tool** model F300E B06 Air Feeder & Straightener, s/n 1171, 12"Wx30"L

**Dallas/Coilmatic** model D400/XCFA1216 Air Feeder & Straightener, s/n 15985/72CMB0362

**Colt Automatic** model C2506 Air Feeder & Straightener, s/n 110126212

**Colt Automatic** model C2506-12 Air Feeder & Straightener, s/n 1101265, 18"Wx12"L

**Colt Automatic** model C2501230 Air Feeder & Straightener, s/n 1101269, 12"Wx30"L



1 OF 7

AIR FEEDS INC. AIR FEEDER & STRAIGHTENER



1 OF 2

FEED LEASE AIR FEEDER & STRAIGHTENER



1 OF 2

6,000LB CAP.

COILMATIC MODEL CC1260 CRADLE



1 OF 7

UP TO 8,000LB CAP.

FTD MODEL B CRADLE



1 OF 3

DALLAS CRADLE



1 OF 2

AIR FEEDS INC. CRADLE



1 OF 3

UP TO 6,000LB CAP.

AMERICAN STEEL UNCOILER



4,000LB CAP.

COILMATIC UNCOILER



2,500LB CAP.

LITTELL UNCOILER



2,000LB CAP.

VOGEL UNCOILER



DOMINION POWER PRESS REEL

**Colt** model N53618 Air Feeder & Straightener, s/n 110311, 36"Wx18"L  
**Colt** Air Feeder & Straightener, 18"Wx12"L  
**Colt** Air Feeder, 5" Wx3" L  
**(3) Air Feeds Inc.** model AF-4 Air Feeder & Straightener, s/n 781062, 760736, 760622, 18"Wx18"L  
**(2) Air Feeds Inc.** model Af-3 Air Feeder & Straightener, s/n 871248, 860518, 30"Wx18"L  
**(2) Air Feeds Inc.** Air Feeder & Straightener, 24"Wx36"L & 24"Wx18"L  
**(2) Feed Lease** model FL5 Air Feeder & Straightener, s/n 2747, 3307, 18"Lx24"W  
 Air Feeder & Straightener, 12"Wx30"L

## CRADLES

**(2) Coilmatic** model CC1260 Cradle, s/n 86346, 87507, 6,000lb cap., 12" & 10" Slit Width, 60" Dia.  
**FTD** model A Cradle, s/n 05-93-01, 16" Slit Width, 68" Dia.  
**FTD** model BL Cradle, s/n 06-02-08, 8,000lb cap., 16" Slit Width, 72" Dia.  
**(5) FTD** model B Cradle, s/n 09-99-06, 11-95-05, 09-94-02, 09-94-03, 09-94-04  
**Dallas** Cradle, 24" Slit Width, 67" Dia.  
**Dallas** model 4058 & 20190 Cradle, s/n 14008&14009, 18" Slit Width, 60" Dia.  
**Dallas** model 20191 & 50832 Cradle, s/n 15656&15657, 24" Slit Width

**Air Feeds Inc.** model C60 Cradle, s/n 7600738, 1,860lb cap., 16" Slit Width  
**Air Feeds Inc.** Cradle, 18" Slit Width, 60" Dia.  
**Humphries** model C020-16H Cradle, s/n 859  
**Colt** Cradle, 2.5"-16" Slit Width, 67" Dia.  
**Rowe** model 2010-PR Cradle, s/n 10393  
**SM** model S-16532 Cradle, s/n B868-13293

*Visit [infinityassets.com](http://infinityassets.com) to view complete specs & additional photos*

# BORING & MACHINING



STANKO MODEL 2620B HORIZONTAL BORING MILL

**Stanko** model 2620B Horizontal Boring Mill, s/n 2425, Dynamics Research Corporation 3 Axis DRO, PLC Controls, 3.5" Spindle, 2,000RPM, 49"Lx44"W Table, 44" Cross Travel, 39" Spindle Travel, 49" Saddle Travel, 28" In-out Travel of Spindle Bar, 40 Taper

**Deckel** model FP4NC CNC Universal Milling Machine, s/n 2810-3389, Fanuc GN6 Series Controls, Heidenhain DRO, 27"Lx16"W Table, 3,150RPM, Travels: X-22.047", Y-19.685", Z-17.716", 40 Taper

**Bridgeport** Series I Milling Machine model BR2J-42, s/n J-203625, Mitutoyo KA Counter DRO, 2HP, 42"Lx9"W Table, 2,750RPM

**Bridgeport** Series I Milling Machine model JB36488, s/n 358370481W, Mitutoyo 2 Axis DRO, 2HP, 42"Lx9"W Table, 2,750RPM

**Bridgeport** Series I Milling Machine model JB36460, s/n 358550481W, Mitutoyo 2 Axis DRO, 2HP, 42"Lx9"W Table, 2,750RPM

**Bridgeport** Milling Machine, s/n J-179871, Mitutoyo 2 Axis DRO, 1HP, 42"Lx9"W Table, 2,720RPM

**Bridgeport** Milling Machine, s/n J-168777, Fagor 2 Axis DRO, 1HP, 48"Lx9"W Table



DECKEL MODEL FP4NC CNC UNIVERSAL MILL



PARTIAL VIEW OF BRIDGEPORT MILLING MACHINES

**Cincinnati** model No. 3 Vertical Milling Machine, s/n 4A3VIK-29, Quality 800 3 Axis DRO, 60"Lx15"W Table

**Cincinnati** model No. 2 Vertical Milling Machine, s/n 2J2VSKN-11, 55"Lx10"W Table

**Cincinnati** model 2MI Horizontal Milling Machine, s/n F5101-12, 53"Lx9"W Table

**Stanko** model 6R13 Milling Machine, s/n 11, Quality 800 3 Axis DRO, 64"Lx16"W Table, 1,600RPM

**Stanko** model 6R13 Milling Machine, s/n 33, 66"Lx16"W Table, 1,600RPM

**Stanko** model 6R82 Milling Machine, s/n 2915, Quality 800 3 Axis DRO, 52"Lx12"W Table, 1,600RPM



CINCINNATI MILLING MACHINE



STANKO MILLING MACHINE

## LATHES



24" X 106"

20" 4 JAW CHUCK

TARNOW MODEL TUJ-50M ENGINE LATHE



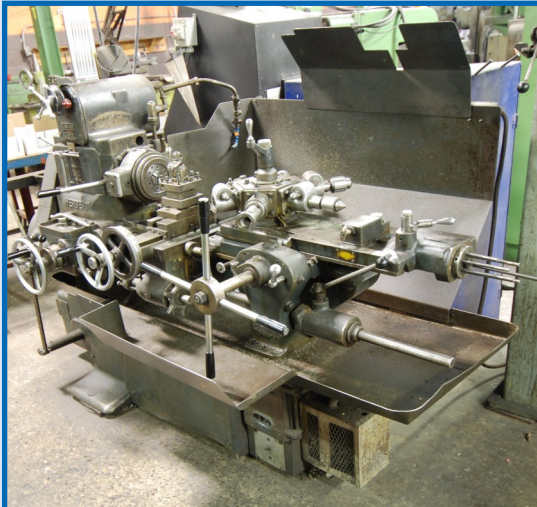
24" X 80"

20" 4 JAW CHUCK

CLOVER MODEL 20/29 ENGINE LATHE



COLCHESTER MODEL STUDENT ENGINE LATHE



HERBERT MODEL 2D TURRET LATHE

**Tarnow** model TUJ-50M Engine Lathe, s/n 2867, 20" 4 Jaw Chuck, 24" Swing, 106" Between Centers, 4" Bore, 1,600RPM, Tailstock, Steady Rests, Tool Post

**Clover** model 20/29 Engine Lathe, s/n 6567, 20" 4 Jaw Chuck, 24" Swing, 80" Between Centers, 3" Bore, 2,000RPM, Tailstock, Steady Rests, Tool Post

**Monarch** model 612 Lathe, s/n 50408, 12" 3 Jaw Chuck, 24" Swing, 80" Between Centers, 1,500RPM, Tailstock, Steady Rests

**Colchester** model Student Engine Lathe, s/n J4157/2, 7-1/2" 3 Jaw Chuck, 12" Swing, 24" Between Centers, 1-3/4" Bore, 1,290RPM, Tailstock

**Herbert** model 2D Turret Lathe, s/n S-10727M, 6" Collet Style Chuck, 14" Swing, 14" Between Centers, 1-3/4" Bore, 2,550RPM, 6 Station Turret, Tool Post

## DRILLS



1 OF 5 RADIAL DRILLS

ASQUITH ODI 5MT 5' RADIAL ARM DRILL



PARTIAL VIEW OF DRILL PRESSES

(2) **Asquith** ODI 5MT 6' Radial Arm Drill, s/n ODI11584, ODI9882, Box Table

**Asquith** ODI 5MT model P-29946 5' Radial Arm Drill, s/n ODI11788, 42"Lx33"Wx20"H Box Table

**A.B. Arboga** 1.256 model ER830 3'6" Radial Arm Drill, s/n 111002, 3,390RPM, 20"Lx16"Wx20"H Box Table

**EMA-Novara** 1.256 3'6" Radial Arm Drill, s/n 122486, 2,700RPM, Box Table

**Clausing** model 16VC Drill Press, s/n 505-679, 4,500RPM, 1/2" capacity

**Rockwell** model EFI-3T Drill Press, s/n 29236-07, 3,360RPM, 31"Lx22"W

**Startrite** model EFI Drill Press, s/n 7601, 2,800RPM

**Miller** No. 16 3-Head Drill Press, s/n 51-1603, 3,000RPM

Visit [infinityassets.com](http://infinityassets.com) to view complete specs & additional photos





RIBON CYLINDRICAL GRINDER



JAKOBSEN MODEL SJ16 SURFACE GRINDER



1 OF 2

K.O. LEE SURFACE GRINDER



ALPA MODEL RT-700 SURFACE GRINDER



45TON X 10'

ALLSTEEL MODEL 4310 PRESS BRAKE



HYD-MECH MODEL S20 HORIZONTAL BANDSAW



GROBE VERTICAL BANDSAW

## SURFACE GRINDERS

- Ribon Cylindrical Grinder, ID Attachment, 53"Lx12"W Table
- Jakobsen model SJ16 10" x30" Surface Grinder, s/n 6825
- (2) K.O. Lee model S612H 6" x12" Surface Grinder, s/n 1124-661, 1536-1064
- Elliot model 8-20 8"x20" Surface Grinder, s/n 109596-1321
- Alpa model RT-700 Surface Grinder, s/n 47378, 40"Lx12"W Table

## BRAKE PRESSES & SAWS

- Allsteel model 4310 45 Ton x 10' Press Brake, s/n 576, Back Gauge
- Brown Boggs model 101 Manual Brake, 16GAx26"
- Hyd-mech model S20 Horizontal Bandsaw, s/n 60597959
- Grob model NS18 Vertical Bandsaw



**1 OF 3 UP TO 75KVA**

**TAYLOR WINFIELD PRESS WELDER**



**1 OF 9 UP TO 220KVA**

**PROGRESSIVE SPOT WELDER**



**8 AVAILABLE**

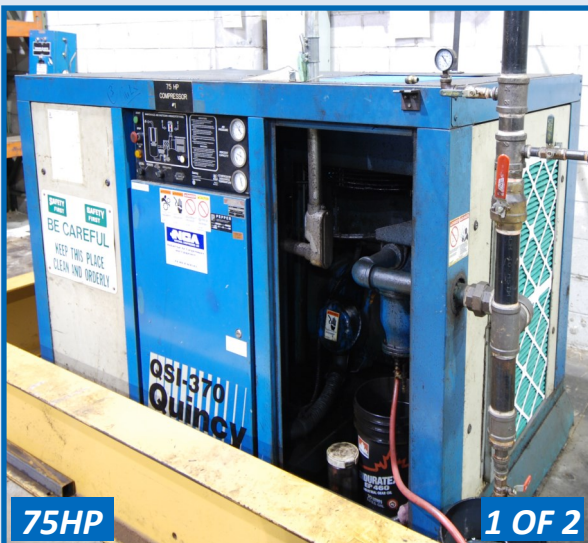
**PARTIAL VIEW OF WELDERS**

## WELDING DEPARTMENT



**150HP**

**JOY-TWISTAIR AIR COMPRESSOR**



**75HP**

**1 OF 2**

**QUINCY MODEL QSI-370 AIR COMPRESSOR**

**Taylor Winfield 75kVA Press Welder, s/n CT19015**

**Taylor Winfield 50kVA Press Welder, s/n CT16687**

**Peer (Rainbow) model FR415 15kVA Press Welder, s/n 12439**

**National Electric Welding Machine model Size 3 Spike 220kVA Spot Welder, s/n 7027, 16" Throat, 400 Amp**

**Progressive model PRB-150-1B 150kVA Spot Welder, s/n 2259, 18" Throat**

**Progressive model EA-10-15B 10kVA Spot Welder, s/n S-8808, 15" Throat**

**Weld-o-matic model AF2B 50kVA Spot Welder, s/n 1946, 36" Throat**

**Weld-o-matic model AS 20kVA Spot Welder, s/n 1184, 18" Throat**

**Weld-o-matic model AF 15kVA Spot Welder, s/n 1004, 24" Throat**

**Weld-o-matic model FTC 10kVA Spot Welder, s/n 1105, 18" Throat**

**Taylor Winfield model WB-30-30 20kVA Spot Welder, s/n 6T1073**

**AH model R-ATC15 15kVA Spot Welder, s/n 2092**

**(2) Lincoln Electric Ideal Arc model DC-600 Welder, s/n C1970700426, C1971200152**

**Lincoln Electric Ideal Arc model R3S-325 Welder, s/n AC451043**

**Miller model CP-300 Welder, s/n JF931438**

**Miller Welder, s/n CP78916**

**Miller model 250 AC/DC HF TIG Welder, s/n GL47441**

**Miller Dialarc HF Welder, s/n JH189182**

**Hobart Welder**

## COMPRESSORS

**Joy-Twistair model 750 150HP Air Compressor**

**Air Screw model 71 150HP Air Compressor, s/n Mk1/WG127**

**SSR model EP100 100HP Air Compressor**

**(2) Quincy model QSI-370 75HP Air Compressor, s/n 94823, 94824**

**Sullinair model 16BS-75H-ACAC 75HP Air Compressor, s/n 003-86587**

**Joy-Twistair model 720 50HP Compressor, s/n TA0720E/WW5BT**

**Atlas Copco model NT-914 Air Compressor, s/n A210354**

**Bruner Air Compressor**

# FORKLIFTS



1 OF 2

UP TO 11,500LB

CATERPILLAR 5,000LB ELECTRIC FORKLIFT



8,000LB

YALE 8,000LB ELECTRIC FORKLIFT

**Caterpillar** model M100  
11,500lb capacity Electric  
Forklift, s/n Z765461, 1  
Stage, 130" Max Lift w/  
Charger

**Caterpillar** model M50  
5,000lb capacity Electric  
Forklift, s/n 26N02170, 3  
Stage, 227" Max Lift w/  
Charger

**Yale** model  
ERC080HAN36ST071  
8,000lb capacity Electric  
Forklift, s/n N323114, 3  
Stage, 145" Max Lift w/  
Charger

**Clark** model EC500-80B  
7,400lb capacity Electric  
Forklift, s/n E685-0083-4556  
FA, 1 Stage, 87" Max Lift w/  
Charger

**Clark** model EC500-40F  
4,000lb capacity Electric  
Forklift, s/n E3558803156  
FA, 2 Stage, 130" Max Lift w/  
Charger

**Clark** model EG 40F 4,000lb  
capacity Electric Forklift  
(2) **Hyster** model E60BS  
5,600lb capacity Electric  
Forklift, s/n B108V11799F,  
B108V11801F, 3 Stage, 189"  
Max Lift w/ Charger  
**Climax** model 60EC/959  
5,000lb capacity Electric  
Forklift w/ Charger



1 OF 3

UP TO 7,400LB

CLARK 4,000LB ELECTRIC FORKLIFT



2 AVAILABLE

HYSTER MODEL E60BS 5,600LB ELECTRIC FORKLIFT



MOTIVATION JIB CRANE



TAYLOR WINFIELD PRESS WELDER

# JIB CRANES

12'Hx10'L **Motivation** Jib  
Crane, 6,000lb capacity w/  
Jet 3 Ton Electric Hoist  
Free Standing Crane System,  
50'Lx5'W Bridge, 1,000lb ca-  
pacity



LARGE OFFERING OF JIB CRANES



UP TO 6,000LB

PARTIAL VIEW OF JIB CRANES

Please visit  
[www.infinityassets.com](http://www.infinityassets.com)  
for a full listing of Jib  
Cranes available



1 OF 3

CHICAGO MACHINE CO. RIVETER



1 OF 2

KRW H FRAME PRESS



MITUTOYO COMPARATOR

# MISCELLANEOUS

**Chicago Machine Co. Riveter  
Thompson Riveter**

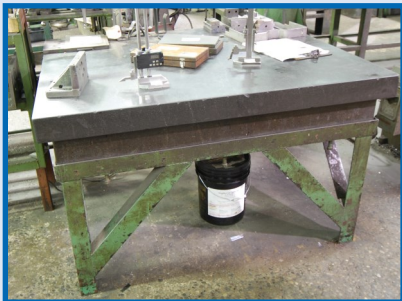
**KRW model 37 25 Ton H Frame  
Press, s/n 37N  
H Frame Press**

**Mitutoyo model PH350H Optical  
Comparator, s/n 50031**

**Wilson Hardness Tester  
60"Lx48"W Stepped Granite  
Surface Plate**

**Nordson model PA-2520 Gluer**

**Plus:** Pallet Racking, stackable metal bins, metal carts & tables, floor scale, arbor presses, end mills, drill bits, tool holders, dividing heads, precision inspection instruments, belt sanders, tool post grinders, die racking, dump hoppers, coil stock, and much more!



GRANITE SURFACE PLATE



PARTIAL VIEW OF METAL BINS



MACHINE TOOLING



PARTIAL VIEW OF DIE RACKING



PARTIAL VIEW OF PRECISION INSTRUMENTS

**Visit [infinityassets.com](http://infinityassets.com)  
to view complete specs  
& additional photos**

## TERMS OF SALE



**Payment:** All payments must be in Cash, Certified Funds, Wire Transfers, or Company Checks, which must be accompanied with a bank letter guaranteeing irrevocable payment to Infinity Asset Solutions Inc. Invoices up to \$2,000 can be paid by Visa, Mastercard or Interac.

All Online bidders must register on Bidspotter by 5pm Tuesday May 31.

A 15% buyers premium will be added to all onsite purchases (18% Online).

A \$500 refundable security deposit is required upon onsite registration (\$2,000 Online).

A 25% deposit is required at time of purchase, balance due by 4pm Thursday June 2, 2016. NO EXCEPTIONS.

All goods are sold "As Is, Where Is", ALL SALES ARE FINAL. All subject to prior sale. Complete terms and conditions including removal procedures, are available on our website and will be provided at the time of registration.

*This brochure is meant merely as a guide. Infinity Asset Solutions makes no guarantee, expressed or implied, as to the accuracy of the information in this brochure. Buyers should inspect the goods beforehand to satisfy themselves.*

## REMOVAL TIMES

All items by Friday June 17, 2016.

**Hours:** Monday—Friday between 8 am—4 pm.

No items may be removed during auction. NO EXCEPTIONS

## DIRECTIONS:

From Toronto Pearson Intl Airport to 1030 Heritage Road, Burlington, ON. Exit Airport and get on ON-427 S. Follow ON-427S, Queen Elizabeth Way and ON-403 W to Appleby Line/Halton Regional Rd 20 in Burlington. Take the Appleby Line exit from ON-403 W. Turn Right onto Appleby Line. Turn Left onto North Service Road. Turn Right onto Heritage Road.

**Bid Live Onsite &  
Online Via  
BidSpotter.com**

Member In Good Standing Of:



**• AUCTIONS • LIQUIDATIONS  
• FINANCING • APPRAISALS**

63 Maplecrete Road, Concord, Ontario L4K 1A5 Canada

[infinityassets.com](http://infinityassets.com) • Tel: (905) 669-8893 • Fax: (905) 669-7512