

# TWO OF FOUR MAJOR PUBLIC AUCTIONS

By Order Of The Receiver For Royal Oak Industries Inc.: Royal Oak Boring (Port Huron MI) & Bronson Precision Products (Bronson MI)

## World-Class High Precision CNC Machining Facility

### Large Capacity 4th & 5th Axis

### Horizontal CNC Machining

Major Manufacturer of Engine Blocks, Heads, Crank Case, & Connecting Rods



**Over (40) CNC  
Machine Tools  
as late as 2015**

**Over (1500) Lots of:  
Machinery, Tooling,  
QC Gauges,  
Plant Support,  
Parts Crib,  
Material Handling,  
Bridge Cranes**



**Live On-Site & Webcast Auction (Core Assets)**

**Tuesday June 14th, 2016 at 10:00 AM (EDT)**

**Online Auction (Support Assets) \*Electronic Bidding Only**

**Bidding Opens: Monday, June 20th, 2016 at 9:00 AM (EDT)**

**2340 Dove St, Port Huron, Michigan 48060**

Managed By:



**The  
Branford**  
GROUP

Equipment Auctions Worldwide

www.TheBranfordGroup.com

203.488.7020

**HYPER**  
asset maximization services

www.hyperams.com  
(847) 499-7049

In Conjunction With:

**INFINITY**  
Asset Solutions

www.infinityassets.com  
(905) 669-8893

**M·N·A**  
MACHINERY NETWORK AUCTIONS

www.machinerynetwork.com  
(888) 998-4440

Over 500 images online

# Royal Oak Boring Liquidation consists of (2) Auctions:

Live On-Site & Webcast Auction (Core Assets) Tuesday June 14th, 2016 at 10:00 AM (EDT)  
Online Auction (Support Assets) \*Electronic Bidding Only Bidding Opens: Mon., June 20th, 9:00 AM (EDT)



2015

UNDER 300 HOURS



OVER \$1,200,000 REPLACEMENT COST EA.

U-AXIS

(2) HELLER H 10000 5-AXIS CNC HORIZONTAL MACHINING CENTER, 2 AVAILABLE



2013

4,300 HOURS

OKK CNC HORIZONTAL MACHINING CENTER, HM1000S, FULL 4TH AXIS



OVER (200) HSK TOOLS

PARTIAL VIEW OF HELLER HSK-100 TOOLING



2015

UNDER 200 HOURS

TOYODA FH1000SX CNC HORIZONTAL MACHINING CENTER

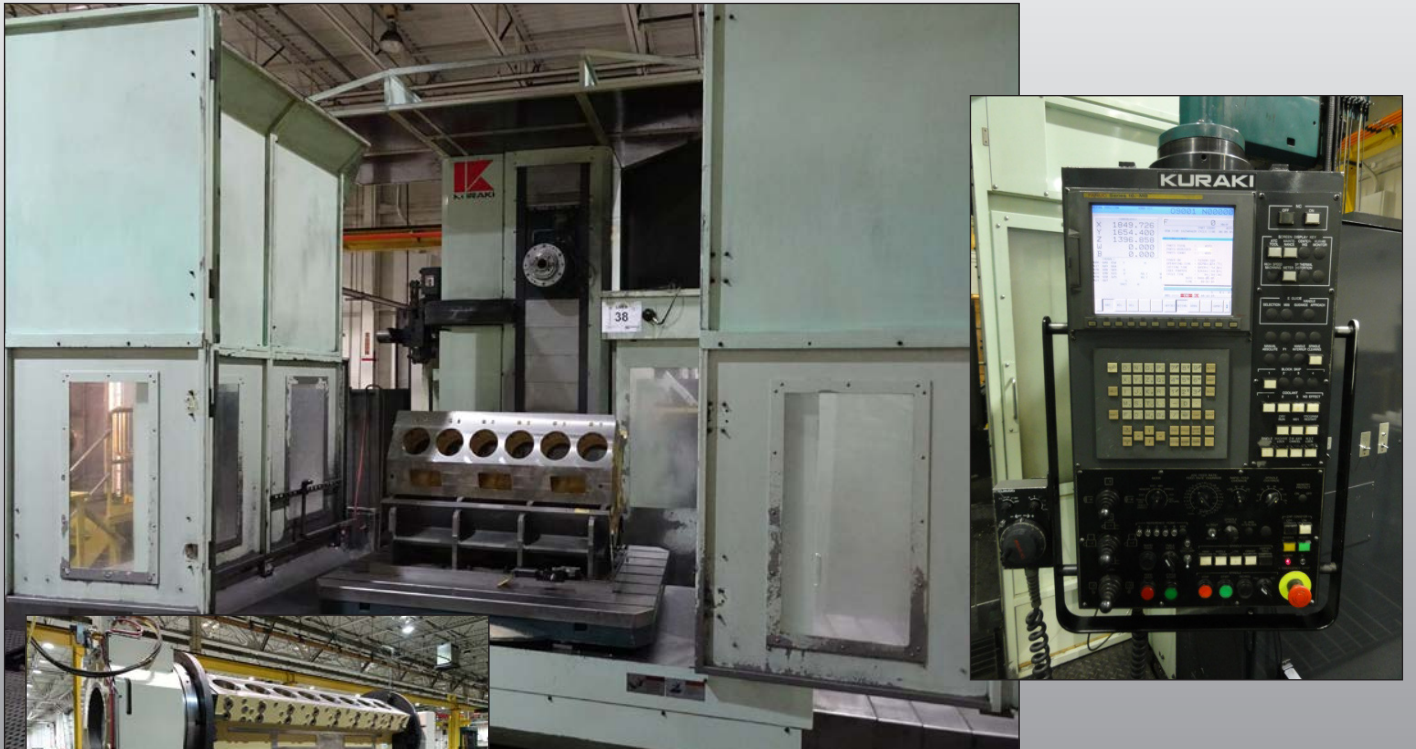


INSTALLED 2015

UNDER 200 HOURS

TOYODA FH800SX-I CNC HORIZONTAL MACHINING CENTER

# Kuraki KBT-11Z 4" CNC Horizontal Boring Mill

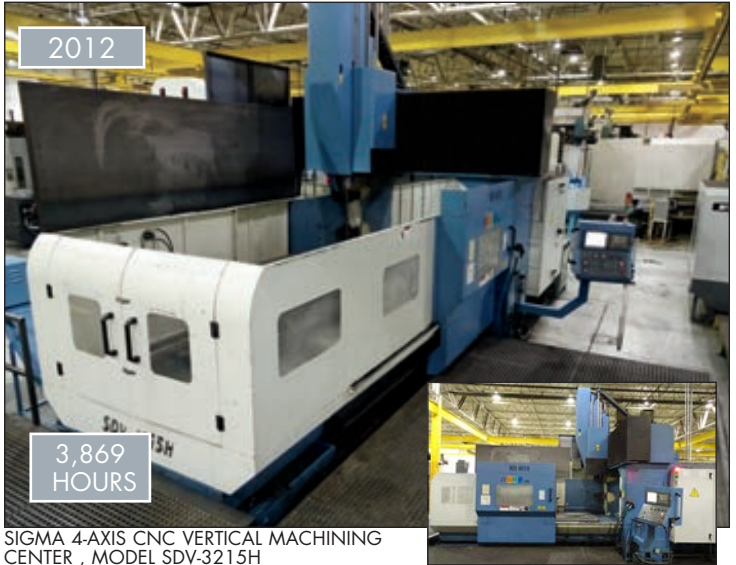


DUAL  
TSUDAKOMA  
ROTARY  
TABLES  
SYSTEM



1 OF 2

REBUILT 2013



2012

3,869  
HOURS

IKEGAI 4" CNC HORIZONTAL BORING MILL MODEL NB110T

SIGMA 4-AXIS CNC VERTICAL MACHINING CENTER, MODEL SDV-3215H

Live On-Site & Webcast Auction (Core Assets) Tuesday June 14th, 10:00 AM (EDT)

# Over (40) CNC Horizontal Machines by OKK, Heller, Toyoda, Sigma, Ikegai, Kuraki, & Cincinnati as late as 2015



OKK CNC HORIZONTAL MACHINING CENTERS, MODEL HM6300S, 12K RPM



OKK CNC HORIZONTAL MACHINING CENTER, MODEL HM600, 12K RPM



OKK CNC HORIZONTAL MACHINING CENTER, MODEL HM 1000S



OKK CNC HORIZONTAL MACHINING CENTER, MODEL HM100S



MAG CINCINNATI CNC HORIZONTAL MACHINING CENTER, MODEL HPC-1000XT 4-AXIS & MODEL H5-1000XT 5-AXIS



4TH AXIS ROTARY TABLE



TELESIS EVC SOLID STATE LASER MARKING SYSTEM

The first portion of this Liquidation is auction # 1 which is conducted live on-site and also in real time via the webcast. This portion of the sale consists of the larger core-assets (machines) starting at 10:00am on June 14th, we recommend all buyers be prompt, doors will be open @ 8:00am.

This flyer is only a partial listing and general overview of this offering, we encourage you to visit our websites for further details and to view over (500) Images available via the Photo Gallery @ [www.thebranfordgroup.com](http://www.thebranfordgroup.com)



SAMSUNG CNC VERTICAL MACHINING CENTER, MODEL MCV660



HAAS CNC VERTICAL MACHINING CENTER, VF5/50



ZOLLER VENTURION MODEL 450/6/D400 CNC TOOL PRESETTER



VIEW OF TOYODA HORIZONTAL MACHINING CENTERS, MODELS FA800, FA630 & FA550



NORTH TOOL CAM BEARING PRESS



PROCECO AQUEOUS CONVEYORIZED WASH LINE



TENNANT LP GAS FLOOR SWEEPER MODEL T20



RANSHOFF PARTS WASHER

**Over (5000) Cat 50 Taper Tool Holders**



PROCECO TYPHOON AQUEOUS WASHER



GENIE MANLIFT MODEL Z30/20HD

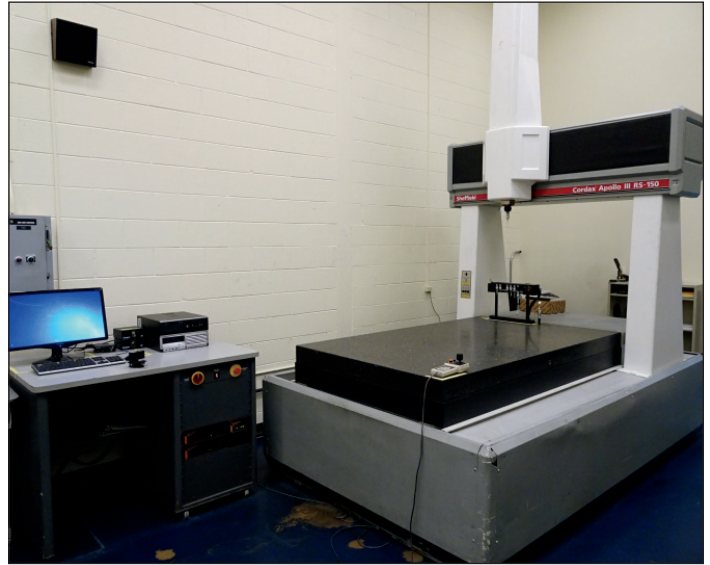


Online Auction  
(Support Assets)  
Bidding Opens:  
Mon., June 20th,  
9:00 AM (EDT)

# Over 100,000 Square Feet of Machinery & Support Equipment, Over (1500) Lots!



ZEISS COORDINATE MEASURING MACHINE, MODEL MICURA 5/5/5



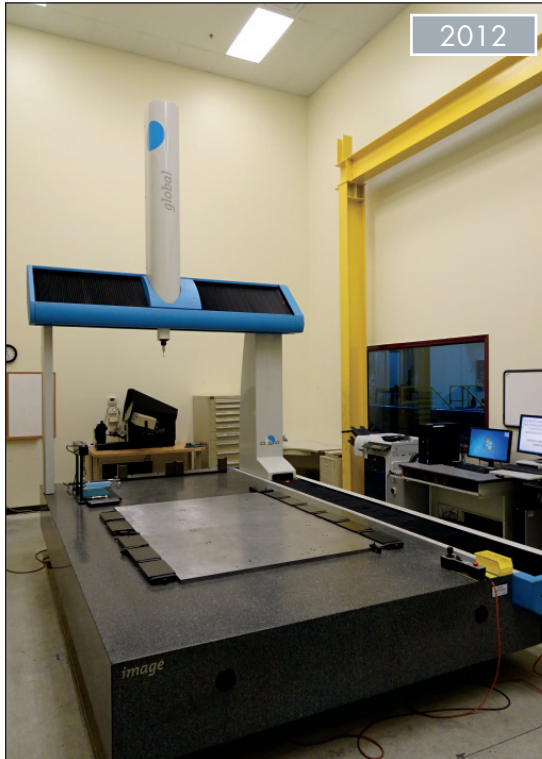
G&L COORDINATE MEASURING MACHINE, MODEL CORDAX APOLLO RS150



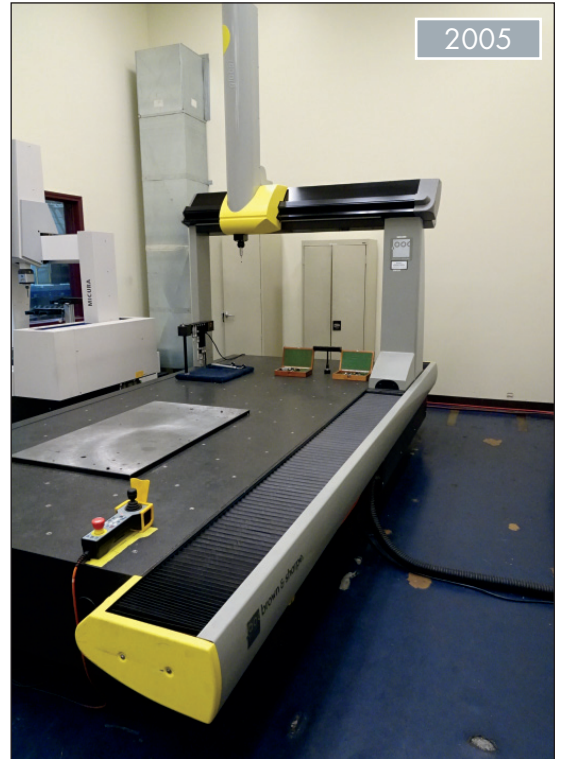
PARTIAL VIEW OF HEIGHT GAUGES



ZEISS CONTOUR RECORD CONTOUR & SURFACE MEASURING MACHINE, MODEL 1710-SD3-13



DEA GLOBAL CNC COORDINATE MEASURING MACHINE, MODEL GLOBAL F20.33.15



DEA GLOBAL CNC COORDINATE MEASURING MACHINES, MODEL GLOBAL IMAGE 153010



HEXAGON TECHNOLOGY COORDINATE MEASURING MACHINE, MODEL 7.10.7 SF



VIEW OF CATERPILLAR FORKLIFT TRUCKS

3000# TO  
15,000#  
CAPACITY



FOWLER TRIMOS  
ALTIA HEIGHT GAGE



KAESER 100 HP AIR  
COMPRESSOR



PARTIAL VIEW OF COLLETS, CARBIDE  
INSERTS, TOOLING



PARTIAL VIEW OF LISTA CABINETS



PANEL STORAGE SYSTEMS  
VERTICAL STORAGE LIFT,  
TYPE LEAN LIFT 2460

## Upcoming Auction



**Bronson Precision Products**  
(sister company to RB)



## Over (140) CNC Machines - 200,000 Sq. Ft. Facility

**Live On-Site & Webcast Auction (Core Assets)**  
Thursday June 16th, 2016 at 10:00 AM (EDT)

**Online Auction (Support Assets) \*Electronic Bidding Only**  
Bidding Opens: Tuesday, June 21st, 2016 at 9:00 AM (EDT)

**Preview: Wednesday, June 15th from 9:00 AM - 4:00 PM (EDT)**



**World-Class High Precision CNC Machining Facility**  
**Large Capacity 4th & 5th Axis Horizontal CNC Machining**  
**Major Manufacturer of Engine Blocks, Heads, Crank Case, & Connecting Rods**  
**Over (40) CNC Machine Tools as late as 2015**

Over (1500) Lots of:

**Machinery, Tooling, QC Gauges, Plant Support, Parts Crib, Material Handling, Bridge Cranes**

**Live On-Site & Webcast Auction (Core Assets)**

**Tuesday June 14th, 2016 at 10:00 AM (EDT)**

**Online Auction (Support Assets) \*Electronic Bidding Only**

**Bidding Opens: Mon., June 20th, 9:00 AM (EDT) First Lot Begins to Close: Tues., June 21st, 11:00 AM (EDT)**

**Preview: Monday, June 13th from 9:00 AM - 4:00 PM (EDT)**

**Equipment Location: 2340 Dove St, Port Huron, Michigan 48060**

This flyer is only a partial listing and general overview of this offering, we encourage you to visit our websites for further details and to view over (500) Images available via the Photo Gallery @ [www.thebranfordgroup.com](http://www.thebranfordgroup.com)

Webcast Powered by



## Live On-Site Auction Buyers Premium

**ONSITE BUYERS:** A discounted 16% BP for buyers paying via Cash, Cashiers Check, Company Check or Wire Transfer will apply to your purchase or 19% BP for any buyers paying via Credit Card. (Example: a \$100 purchase paying by cash instrument the total with BP is \$116 and a \$100 purchase paying via credit card the total with BP is \$119)

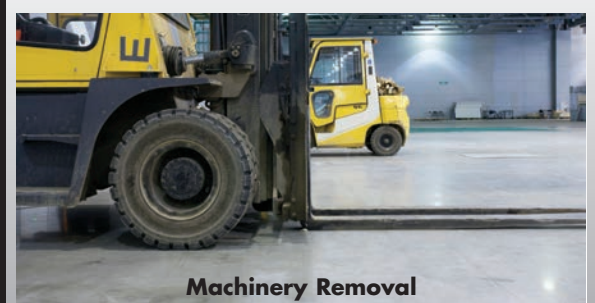
**WEBCAST BUYERS:** A discounted 19% BP for buyers paying via Cash, Cashiers Check, Company Check or Wire Transfer will apply to your purchase or 22% BP for any buyers paying via Credit Card. (Example: a \$100 purchase paying by cash instrument the total with BP is \$119 and a \$100 purchase paying via credit card the total with BP is \$122)

## Online Auction Buyers Premium

A discounted 16% BP for buyers paying via Cash, Cashiers Check, Company Check or Wire Transfer will apply to your purchase or 19% BP for any buyers paying via Credit Card. (Example: a \$100 purchase paying by cash instrument the total with BP is \$116 and a \$100 purchase paying via credit card the total with BP is \$119)

**\*Deposit required to bid.** Payment is due within 48 hours of receiving invoice by wire transfer, company check with a bank letter of guarantee, certified funds, cash, Visa, MasterCard, American Express, or by making a deposit at a local Bank of America into our CT account. Visit [www.thebranfordgroup.com](http://www.thebranfordgroup.com) for complete terms & conditions.

**Complete Lot  
Catalogs & Video  
Tours available  
online on or before  
May 31st**



**Machinery Removal**

**Rigging & Dismantling** Please visit our website for a complete list of recommended rigging and dismantling vendors. Many of these companies will also be on-site during preview and auction day for consultation and your quotation needs. All rigging vendors must be pre-qualified and carry a minimum of \$2,000,000 liability insurance. Please contact customer service @ 203-488-7020 [service@thebranfordgroup.com](mailto:service@thebranfordgroup.com) for further information.

In the event that a bidder cannot place bids on the day of a sale, bidders may submit **absentee (proxy) bids** prior to the sale day by faxing our **Proxy Bid Form** (which can be found on our website) to 203.488.4577 or 203.643.2062. For questions regarding machinery and equipment, please email us at [service@thebranfordgroup.com](mailto:service@thebranfordgroup.com)

This brochure is only a partial listing. Please visit our website [www.TheBranfordGroup.com](http://www.TheBranfordGroup.com) for more detailed listings and photos.

Please note: Items and quantities are subject to prior sale, please view the lot catalog online prior to the auction for the complete and final offering.



**The Branford**  
GROUP  
Equipment Auctions Worldwide

896 Main Street  
Branford, CT 06405



INDUSTRIAL AUCTIONEERS ASSOCIATION



PRESORTED FIRST CLASS MAIL  
U.S. POSTAGE  
**PAID**  
Permit No. 80  
Milford, CT

## TWO MAJOR PUBLIC AUCTIONS

**Major Manufacturer of Engine Blocks, Heads, Crank Case, & Connecting Rods**

**Live On-Site & Webcast Auction (Core Assets)**

Tuesday June 14th, 2016  
at 10:00 AM (EDT)

**Online Auction (Support Assets)**

Monday, June 20th, 2016  
at 9:00 AM (EDT)

**Preview:**

Monday, June 13th  
9:00 AM – 4:00 PM (EDT)

**Equipment Location:**

**2340 Dove St,  
Port Huron, Michigan 48060**

**FIRST CLASS MAIL**

FORWARDING SERVICE REQUESTED

## TWO OF FOUR MAJOR PUBLIC AUCTIONS

**World-Class High Precision CNC Machining Facility**



**Live On-Site & Webcast Auction (Core Assets) Tuesday June 14th, 10:00 AM (EDT)**

**Online Auction (Support Assets) \*Electronic Bidding Only**  
**Bidding Opens: Monday, June 20th, 2016 at 9:00 AM (EDT)**

**Preview: Monday, June 13th from 9:00 AM – 4:00 PM (EDT)**



**Equipment Location: 2340 Dove St, Port Huron, Michigan 48060**

**(4) AUCTIONS: ROYAL OAK BORING JUNE 14TH & BRONSON PRECISION PRODUCTS JUNE 16TH**



203.488.7020

Managed By:  
**The Branford**  
GROUP  
Equipment Auctions Worldwide  
[www.TheBranfordGroup.com](http://www.TheBranfordGroup.com)

**HYPER**  
asset maximization services

[www.hyperams.com](http://www.hyperams.com)  
(847) 499-7049

In Conjunction With:  
**i INFINITY**  
Asset Solutions

[www.infinityassets.com](http://www.infinityassets.com)  
(905) 669-8893

**M·N·A**  
MACHINERY NETWORK AUCTIONS

[www.machinerynetwork.com](http://www.machinerynetwork.com)  
(888) 998-4440