

# ONLINE AUCTION

**PROSYSCO LTD.** 

Your Vision. Our Quality.™  
360 Ambassador Drive, Mississauga, ON

**World-Class Provider of Custom Engineered Solutions for Pharmaceutical & Beverage Industries**  
*Complete Stainless Steel Fabrication Facility*



**BAYKAL MGH 3113 CNC HYDRAULIC SHEAR**



**LEMAS TR 200/6 HYDRAULIC PLATE ROLLS**



**BAYKAL APHS 37300 CNC HYDRAULIC PRESS BRAKE**



**AKYAPAK APK-80 HYDRAULIC ANGLE ROLLS**

BID ONLINE AT

**BidSpotter.com**

**CLOSES: Thursday August 15<sup>th</sup>, 11AM ET**

**Inspection: Wednesday August 14<sup>th</sup>, 9AM – 4PM or By Appointment**

In Conjunction with:

 **INFINITY** Asset Solutions  
905.669.8893 • [infinityassets.com](http://infinityassets.com)

- AUCTIONS
- LIQUIDATIONS
- FINANCING
- APPRAISALS

Managed by:

**CANAM-APPRAIZ INC.**  
APPRAISERS | LIQUIDATORS | PROPERTY MANAGEMENT | AUCTIONEERS





**APPROX. 65-TON X 10' CAP.**

**HYDRAULIC PRESS BRAKE**



**48" CHUCK**

**WEBSTER & BENNETT VERTICAL BORING MILL**

**PRESS BRAKES**

2021 **BAYKAL** APHS 37300 CNC 5-Axis Hydraulic Press Brake, 330-Ton x 12' (3700mm) Cap., Delem DA-66T CNC Touch Screen Control, Fiessler Laser Curtains, CNC Crowning, 12.5" Stroke, 117hrs, 37,400lb Machine Weight, s/n 27836, 4-Way Die Hydraulic Press Brake, Approx. 65-Ton x 10' Cap. Lot of Asst. Press Brake Dies

**SHEAR**

2021 **BAYKAL** MGH 3113 CNC Hydraulic Shear, 1/2" (13mm) x 10' (3060mm) Cap., Cybelec Cybtouch 8 CNC Touch Screen Controlled Back Gauge, 12 spm, Rear Safety Light Curtains, 426hrs, 25,500lb Machine Weight, s/n 27846

**PLATE ROLLS**

2015 **LEMAS** TR 200/6 Hydraulic Plate Rolls, 6' x 3/8" Cap., 7.87" Dia. of Rolls, Hydraulic Drop-End, DRO, s/n 3191221  
6' Manual Plate Rolls

**SAWS**

2018 **HYD-MECH** S-20 Horizontal Bandsaw, s/n 6B11182562

**BOMAR** Ergonomic 320.250 DGS Horizontal Bandsaw

**GEORG FISCHER** RA4 Orbital Pipe Cutting Saw, s/n 042470669

**TANK TURNING ROLLS**

**RED-D-ARC** Powered Tank Turning Rolls, 10,000lb (30,000lb w/ Idler) x 156" Cap., s/n 35584-C w/ Idler Rolls, s/n 35584-B

2008 **RED-D-ARC** PRESTON EASTIN TDRA10-HD Powered Tank Turning Rolls, 10,000lb Cap. (30,000lb w/ Idler), s/n TDRC10-HD-714 w/ **RED-D-ARC** Idler Rolls

**ANGLE ROLLS**

2005 **AKYPAK** APK-80 Hydraulic Angle Rolls, s/n 80172 w/ Tooling

**IRONWORKER**

**MUBEA MUHR AND BENDER** HPSN 500 Hydraulic Ironworker, 55-Ton Cap., 1-1/4 thru 19/32 Punching, 4" x 4" x 1/2" Angle, s/n 0157589463626 w/ Tooling

**MACHINING**

**WEBSTER & BENNETT** 48" Series M Vertical Boring Mill, D60-2V 2-Axis DRO, 48" 4-Jaw Chuck, 25HP, s/n 386

**MICROWEILY** TY-18455 Lathe, Heidenhain 2-Axis DRO, 10" 3-Jaw Chuck, 18" Swing, 45" Between Centers, 2.25" Bore, Multi-Position Tool Post, Tailstock, s/n R8703-010



**POWERED & IDLER**

**(2) SETS AVAILABLE  
30,000LB CAP. W/ IDLER**

**RED-D-ARCTANK TURNING ROLLS**



**GEORG FISCHER RA4  
ORBITAL SAW**



**2018**

**HYD-MECH S-20 BANDSAW**



**18" X 45"**

**MICROWEILY TY-18455 LATHE**



**55-TON CAP.**

**4" X 4" X 1/2" ANGLE**

**MUBEA HPSN 500 HYDRAULIC IRONWORKER**

Visit [infinityassets.com](http://infinityassets.com) for complete specifications. Bid Online at [BidSpotter.com](http://BidSpotter.com)





**14,700LB CAP.**

**HYSTER S155XL PROPANE FORKLIFT**



**9,000LB CAP.**

**HYSTER S120XMS-PRS PROPANE FORKLIFT**



**4,400LB CAP.**

**NISSAN PROPANE FORKLIFT**

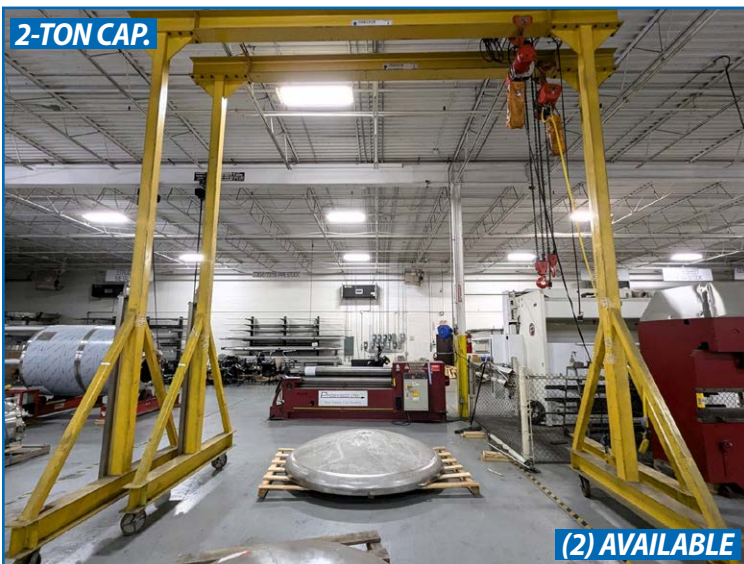


**8,000LB CAP.**

**KOMATSU FG45ST-8 PROPANE FORKLIFT**



**SKYJACK SJIII 3219 SCISSOR LIFT**



**2-TON CAP.**

**(2) AVAILABLE**

**DRESSOR CRANE & HOIST PORTABLE GANTRIES**

**ROLLING STOCK**

**HYSTER S155XL** Propane Forklift, 14,700lb Cap., 187" Max Lift, 3-Stage Mast, Approx. 1,063hrs, s/n D024D06795X

**HYSTER S120XMS-PRS** Propane Forklift, 9,000lb Cap., 208.7" Max Lift, 3-Stage Mast, Side Shift, Approx. 8,888hrs, s/n F004V03795C

**KOMATSU FG45ST-8** Propane Forklift, 8,000lb Cap., 164" Max Lift, 3-Stage Mast, Dual Front Tires, Side Shift, Approx. 10,048hrs, s/n 132683

**NISSAN KCPH02A25PV** Propane Forklift, 4,400lb Cap., 187" Max Lift, 3-Stage Mast, Approx. 5,740hrs, s/n KCPH02P908553

**SKYJACK SJIII 3219** Electric Scissor Lift

**FREE STANDING & GANTRY CRANES**

**GORBEL Free Standing Crane System**, Approx. 75'L Runway x 18'W x 18'H, (3) Independent 4,000lb Cap. Bridge Cranes w/ **DEMAG** Electric Hoists, Pendant Control

**GORBEL Free Standing Crane System**, Approx. 50'L Runway x 18'W x 18'H, (2) Independent 4,000lb Cap. Bridge Cranes w/ **DEMAG** Electric Hoists, Pendant Control (Disassembled)

(2) **DRESSOR CRANE & HOIST LTD.** 2-Ton Portable Gantry Systems w/ Electric Hoists, Approx. 16'L x 16'H

2,000lb Cap. Portable Gantry System w/ Electric Hoist, Approx. 15'L x 13.5'H



**(3) INDEPENDENT BRIDGE CRANES**

**APPROX. 75'L RUNWAY X 18'W X 18'H**

**(2) SYSTEMS AVAILABLE**

**GORBEL FREE STANDING CRANE SYSTEM**





**FRONIUS TPS 400I PULE WELDER**



**(7) AVAILABLE**

**LINCOLN ELECTRIC PRECISION TIG 275 WELDERS**

**BID ONLINE AT**  
**BidSpotter.com**



**2018**

**15HP**

**ATLAS COPCO G11FF COMPRESSOR**



**CUSTOM EDGE FORMING / BEVELING MACHINE**



**(3) AVAILABLE**

**LINCOLN ELECTRIC INVERTEC V160-T PULSE WELDERS**



**(8) AVAILABLE**

**DIVERSITECH T4500 AIR CLEANERS**



**(2) AVAILABLE**

**MILLER SYNCROWAVE 250 DX WELDERS**



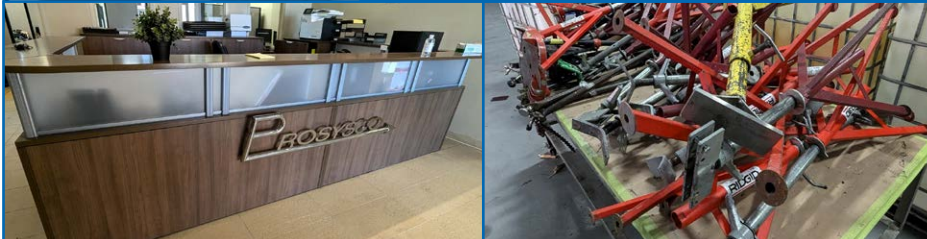
**8 AVAILABLE**



**As New As 2019**

**PARTIAL VIEW OF CHEVROLET EXPRESS VANS & TOYOTA TUNDRA PICKUP TRUCKS**





PARTIAL VIEW OF PLANT SUPPORT

## VEHICLES

- 2019 CHEVROLET Express Van, Approx. 88,367kms, VIN# 1GCWGAFP2K1235142
- 2017 CHEVROLET Express Van, Approx. 120,164kms, VIN# 1GCWGAFF7H1344423
- 2019 CHEVROLET Express Van, Approx. 140,736kms, VIN# 1GCWGAFP9K1235297
- 2017 CHEVROLET Express Van, Approx. 26,500kms, VIN# 1GCWGAFF3H1215479
- 2017 TOYOTA Tundra Pickup Truck, 4X4, Approx. 308,619kms, VIN# N/A
- 2015 TOYOTA Tundra Pickup Truck, 4X4, Approx. 231,204kms, VIN# 5TFUM5F18GX065019
- 2015 TOYOTA Tundra Pickup Truck, 4X4, Approx. 243,695kms, VIN# 5TFUM5F12GX065923
- 2013 TOYOTA Tundra Pickup Truck, 4X4, Approx. 261,215kms, VIN# 5TFUM5F1XEX051054
- 2023 WALLINGA Enclosed Trailer, VIN# N/A

## WELDING EQUIPMENT

- FRONIUS** TPS 400i Pulse Welder, s/n 26375827 w/ WF 25i Wire Feeder, s/n 26427818
- (7) **LINCOLN ELECTRIC** Precision TIG 275 Welders
- (2) **MILLER** Syncrowave 250 DX Welders
- (3) **LINCOLN ELECTRIC** INVERTEC V160-T Pulse Welders
- (8) **DIVERSITECH** T4500 Ceiling – Wall Mount Commercial Ambient Air Cleaners
- Custom Welding Positioner System, 10" 3-Jaw Chuck w/ Idler Rolls

## PLANT SUPPORT EQUIPMENT

- Custom Edge Forming / Beveling Machine, 14' Bed
- 2018 **ATLAS COPCO** G11FF Rotary Screw Air Compressor, 15HP, s/n ITJ135171
- 2020 **CRAFTEX** CX503 Metal Belt Sander, 2000mm x 75mm Belt Size, s/n 2020/035
- PLUS: LARGE QTY.** of Stainless Steel Sheet Metal, Pipe, Fittings Inventory, WIP, Finished Product, General Fabrication & Machining Equipment, Metal Horses & Stands, **RIDGID** Pipe Stands, Heavy Duty Welding Tables, Welding Electrodes, Scaffolding, Portable Job Boxes, Sandblasters, Lifting Straps, ULINE Scissor Lift Pallet Jacks, Cantilever & Pallet Racking, Electric Hoists, Stainless Steel Partitions, Sinks, Power & Hand Tools, Abrasives, Office Equipment and Much More!

### TERMS OF SALE

Payment: All payments must be in Cash, Certified Funds, Wire Transfers, or Company Cheques, which must be accompanied with a bank letter guaranteeing irrevocable payment to Canam Appraiz Inc. Invoices up to \$2,000 can be paid by Visa, Mastercard or Interac.

All bidders must register on Bidspotter by Wednesday August 14th, 5pm. A 18% buyers premium will be added to all Online purchases.

All Potential Bidders must contact Infinity Asset Solutions head office prior to sale to qualify for bidding.

A 25% deposit is required at time of purchase, balance due by Friday August 16th, 2024, 4pm. NO EXCEPTIONS.

All goods are sold "As Is, Where Is", ALL SALES ARE FINAL. All subject to prior sale. Complete terms and conditions including removal procedures, are available on our website.

**REMOVAL TIMES:** All items by Wednesday August 28th, 2024.

**NOTE: EXCLUSIVE RIGGING MAY APPLY, SEE [INFINITYASSETS.COM](http://INFINITYASSETS.COM) FOR MORE DETAILS**

*This brochure is meant merely as a guide. Infinity Asset Solutions makes no guarantee, expressed or implied, as to the accuracy of the information in this brochure. Buyers should inspect the goods beforehand to satisfy themselves.*

In Conjunction with:



**• AUCTIONS**  
**• LIQUIDATIONS**  
**• FINANCING**  
**• APPRAISALS**

905.669.8893 • [infinityassets.com](http://infinityassets.com)

Managed by:



APPRAISERS | LIQUIDATORS | PROPERTY MANAGEMENT | AUCTIONEERS

BID ONLINE AT 