

ONLINE AUCTION

NORAK STEEL
CONSTRUCTION LTD.

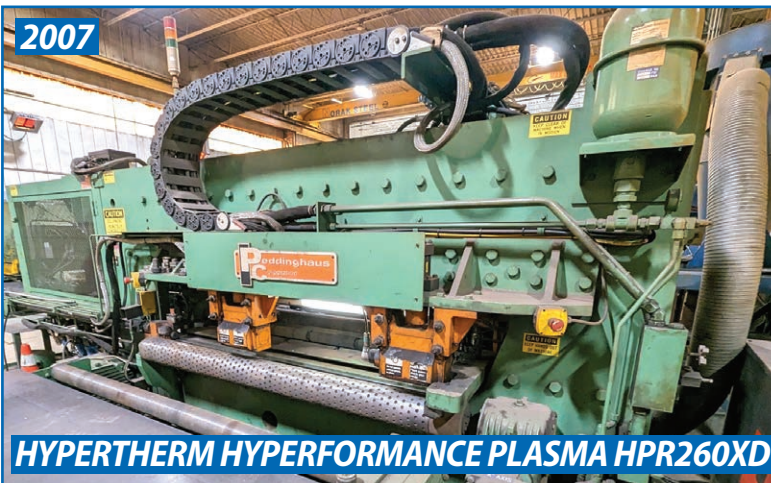
NORAK STEEL CONSTRUCTION
Complete Structural Steel Fabrication Facility
44 Creditstone Rd., Concord (Toronto), Ontario



BURLINGTON AUTOMATION PYTHONX SPG ROBOTIC CNC PLASMA CUTTING SYSTEM



PEDDINGHAUS 643-Q ANGLEMASTER ANGLE LINE



PEDDINGHAUS FPB-1800 CNC PLATE PUNCHING MACHINE



PEDDINGHAUS BDL 1250/9B CNC BEAM DRILL LINE

CLOSES: Tuesday March 19th, 11AM ET

Inspection: Monday March 18th, 9AM – 4PM or By Appointment



INFINITY
Asset Solutions

- AUCTIONS
- LIQUIDATIONS
- FINANCING
- APPRAISALS

905.669.8893
infinityassets.com

BidSpotter



2019
BURLINGTON AUTOMATION PYTHONX SPG ROBOTIC CNC PLASMA CUTTING SYSTEM

ROBOTIC CNC PLASMA CUTTING SYSTEM

2019 **BURLINGTON AUTOMATION** PythonX SPG Robotic CNC Plasma Cutting System, Structural Pipe Grating, s/n IEA70SP600, **HYPERTHERM** XPR300 Power Supply, **HYPERTHERM** XPR OptiMix Console, **HYPERTHERM** XPR TorchConnect Attachment, 2019 **FANUC** ARC Mate 120iD Robot, Pendant Control w/ **FANUC** SYSTEM R-30iB Plus Controller, s/n E19718402, Automated Infeed & Outfeed Conveyors

ANGLE LINE

2010 **PEDDINGHAUS** 643-Q ANGLEMASTER Angle Line Machine, SIEMENS SINUMERIK CNC Control, 75-Ton Punch Cap., 230-Ton Shear Cap., 6" x 6" x 5/8" Angle Cap., s/n 55881, Infeed & Outfeed Conveyors

CNC PLATE PUNCHING MACHINE

2007 **PEDDINGHAUS** FPB-1800 CNC Plate Punching Machine, SIEMENS SINUMERIK CNC Control, s/n 63929, **HYPERTHERM** HyPerformance Plasma HPR260XD Power Supply, s/n 260XD-008516, Infeed & Outfeed Conveyors, **PEDDINGHAUS** DFT2-8 Dust Collector

CNC BEAM DRILL LINE

2010 **PEDDINGHAUS** BDL 1250/9B CNC Beam Drill Line, 9-Spindle, 50" Cap. Max Profile Width, s/n 91366 w/ **PEDDINGHAUS** 1250-510 CNC Straight Cut Band Saw, s/n 17910, SIEMENS SINUMERIK CNC Control, Automated Infeed & Outfeed Conveyors, **DIVERSI-TECH** Fred Extractor

STRUCTURAL STEEL SUPPORT MACHINERY

2022 **PEDDINGHAUS** ROTATOR 1000 Beam Rotator, 13,000lb Cap., s/n 1675

PEDDINGHAUS 210 Super 20 Hydraulic Ironworker, 120-Ton Punch Cap., 6" x 5/8" Angle Cap., s/n 4412953182001

PEDDINGHAUS Duplicator, Fagor CNC Control (2) **ROCKFORD** C-Frame Hydraulic Web Punches Camber Machine, Model CM-2/100T, s/n N0100T11 Hydraulic Beam Straightening Punch Hydraulic Punch



2007
PEDDINGHAUS FPB-1800 CNC PLATE PUNCHING MACHINE



2010
PEDDINGHAUS 643-Q ANGLEMASTER ANGLE LINE



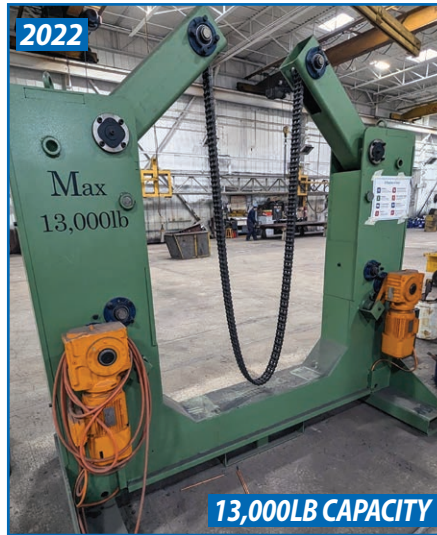
PEDDINGHAUS BDL 1250/9B CNC BEAM DRILL LINE

75-TON PUNCH CAPACITY
230-TON SHEAR CAPACITY
6" X 6" X 5/8" ANGLE CAPACITY

W/ PEDDINGHAUS 1250-510 BAND SAW



PEDDINGHAUS DUPLICATOR



PEDDINGHAUS ROTATOR 1000 BEAM ROTATOR



PEDDINGHAUS 210 SUPER 20 HYDRAULIC IRONWORKER



CAMBER MACHINE

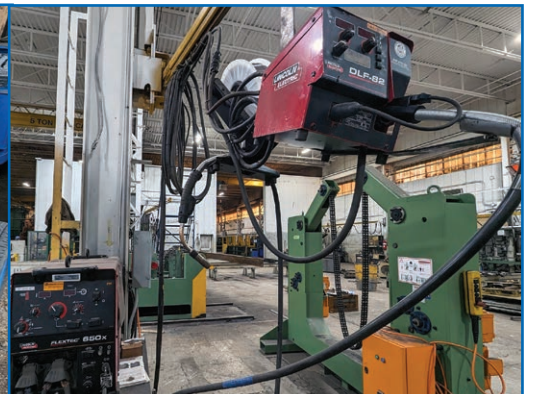


ROCKFORD WEB PUNCH



BEAM STRAIGHTENING PUNCH

Visit infinityassets.com for complete specifications.
Bid Online at BidSpotter.com



PARTIAL VIEW OF NELSON, LINCOLN ELECTRIC, MILLER, HOBART WELDERS



WHEELABRATOR SHOT BLAST SYSTEM

WELDERS

- NELSON Nelweld 6000 Stud Welder, s/n 10016186
- (3) LINCOLN ELECTRIC SHIELD-ARC SA-250 Diesel Powered Welders on Trailers
- (3) LINCOLN ELECTRIC FLEXTec 650X Welders w/ Wire Feeder & Boom
- (6) HOBART MEGA-FLEX 650 RVS Welders w/ Wire Feeder & Boom
- (2) MILLER Millermatic 252 Welders
- (12) LINCOLN ELECTRIC IDEALARC Welders
- (2) HOBART EXCEL-ARC 8065 CV Welders

SHOT BLAST SYSTEM

PROMECAM SISSON-LEHMAN WHEELABRATOR Shot Blast System, Type 62101, s/n 514 w/ INOVATECH ENGINEERING DCC12 Dust Collector



275-TON X 12' CAPACITY

PULLMAX EKP-CNC 275 12'/10' CNC HYDRAULIC PRESS BRAKE



10' X 3/4" CAPACITY

EHT TSS 20-31 HYDRAULIC SHEAR



2008 FREIGHTLINER COLUMBIA 120 TRUCK

CNC PRESS BRAKE

PULLMAX EKP-CNC 275 12'/10' CNC Hydraulic Press Brake, 275-Ton x 12' Cap, CYBELEC DNC 880 CNC Control, Laser Light Curtains, s/n 3631

SHEAR

EHT TSS 20-31 Hydraulic Shear, 10' x 3/4" Cap., ACU-RITE Master-G DRO, Back Gauge

TRUCKS & TRAILERS

2008 FREIGHTLINER Columbia 120 Truck, Approx. 300,000kms

HINO Flatbed Truck

CHEVROLET Silverado Pickup Truck, 4X4, VIN# 3GCNYAEH0L377673

(16) 53' Flatbed Trailers

(2) Extendable 53' Flatbed Trailers

METAL INVENTORY

LARGE OFFERING of Steel Plate, Tube, I-Beam, Angle Iron, etc.

PLANT SUPPORT EQUIPMENT

2008 ALME-GERIMA KFM II Beveling Machine, s/n 08-058-00004

SKYJACK SJIII 4626 Electric Scissor Lift

INGERSOLL-RAND Portable Compressor

KIP 860 Multi-Function Printer

WALTER Cold Saw

FORD-SMITH Heavy Duty Dual Grinder

TAKANG Lathe

Threading Lathes

Tool Cutter Grinders

Radial Arm Drill



HINO FLATBED TRUCK



CHEVROLET SILVERADO PICKUP TRUCK

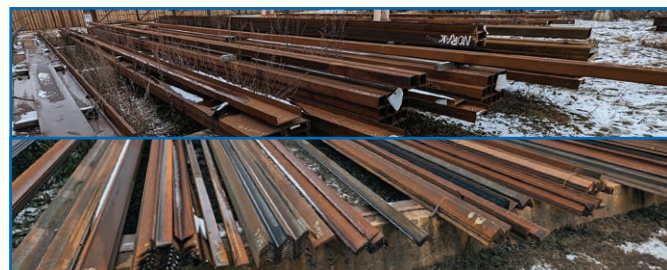


2008 ALME-GERIMA KFM II BEVELING MACHINE



18 AVAILABLE

PARTIAL VIEW OF FLATBED TRAILERS



LARGE OFFERING OF STEEL PLATE, TUBE, I-BEAM, ANGLE IRON, ETC.



SKYJACK SJIII 4626 ELECTRIC SCISSOR LIFT

TERMS OF SALE



Payment: All payments must be in Cash, Certified Funds, Wire Transfers, or Company Cheques, which must be accompanied with a bank letter guaranteeing irrevocable payment to Infinity Asset Solutions Inc. Invoices up to \$2,000 can be paid by Visa, Mastercard or Interac.

All bidders must register on Bidspotter by Monday March 18th, 5pm.

A 18% buyers premium will be added to all Online purchases.

A \$2,000 refundable security deposit is required upon online registration.

A 25% deposit is required at time of purchase, balance due by Wednesday March 20th, 2024, 4pm. NO EXCEPTIONS.

All goods are sold "As Is, Where Is", ALL SALES ARE FINAL. All subject to prior sale. Complete terms and conditions including removal procedures, are available on our website.

REMOVAL TIMES

All items by Friday April 5th. No Exception.

NOTE: EXCLUSIVE RIGGING MAY APPLY, SEE INFINITYASSETS.COM FOR MORE DETAILS

This brochure is meant merely as a guide. Infinity Asset Solutions makes no guarantee, expressed or implied, as to the accuracy of the information in this brochure. Buyers should inspect the goods beforehand to satisfy themselves.



AUCTIONS • LIQUIDATIONS • FINANCING • APPRAISALS

63 Maplecrete Road, Concord, Ontario L4K 1A5 Canada

infinityassets.com • Tel: (905) 669-8893