

ONLINE AUCTION

Surplus to the Ongoing Operations

FOCUS
MACHINE LTD.
screw machine • cold formed products

**Complete Bolt & Fastener
Manufacturing Facility**

840 Garyray Drive, North York, Ontario

2000



4-DIE, 4-BLOW

 VIDEO AVAILABLE

JERN YAO ENTERPRISES JBF-17B4S BOLT FORMER

2001



2-DIE, 3-BLOW

 VIDEO AVAILABLE

ASAHI SUNAC RH-80 HEADER



1-DIE, 2-BLOW

 VIDEO AVAILABLE

NATIONAL MACHINERY 56 LONG STROKE COLD HEADER

CLOSES: Tuesday October 8th, 10AM ET

Inspection: Monday October 7th, 9AM – 4PM or By Appointment



INFINITY
Asset Solutions

- AUCTIONS
- LIQUIDATIONS
- FINANCING
- APPRAISALS

905.669.8893
infinityassets.com

BidSpotter



2001
2-DIE, 3-BLOW
ASAHI SUNAC RH-80 HEADER



VIDEO AVAILABLE



UP TO 1/2" CAP.

HEADERS & BOLT MAKERS

2001 **ASAHI SUNAC** RH-80 2-Die 3-Blow Header Heading Machine, 11mm x 65mm Max Cutting Diameter, KO 1st 80mm, 2nd 65mm, 150 spm, s/n RH-80-23-085

2000 **JERN YAO ENTERPRISES** JBF-17B4S 4-Die 4-Blow Bolt Former, (4) Forging Stations, 12mm Cut-Off Dia. Max, 105mm Cut-Off Length Max, 90mm Kick-Out Length Max, 20mm P.K.O. Length Max, 110 spm, s/n 018

NATIONAL MACHINERY 56 Long Stroke 1 Die 2 Blow (Double Stroke Solid Die) Cold Header, s/n 33125, 150 Parts Per Minute, 3/8" / 10-mm Max Cut Off Diameter, 4-1/2" / 114-mm Max Cut Off Length, 3-1/4" Max Die Kickout

WIRE DRAWERS

RMG 89-1050-66 Wire Drawing Machine, 1/2", s/n 97054156
RMG 67-1040-87 Wire Drawing Machine, 3/8", s/n 01125288

FASTENER ENGINEERS DH-275-300-28 Wire Drawing Machine, 3/8", s/n 568737

THREAD ROLLERS

(2) **TANISAKA HARTFORD** 10-400 Thread Rollers

CNC LATHES

CITIZEN Cincom L20 CNC Lathe, Type L-20, CNC Control, s/n Q11258, Mfg. No. L51620/2657 w/ **CITIZEN** CAV20L-IS Bar Feeder

CITIZEN Cincom L20 CNC Lathe, Type L-20, CNC Control, s/n Q1180 w/ **FMB** Mini Turbo Bar Feeder

MIYANO BND-34T5 CNC Lathe, Fanuc Series 18-T CNC Control, s/n BD60053T w/ **LNS** Super Hydrobar Bar Feeder

MIYANO BNC-34T CNC Lathe, Fanuc Series O-T CNC Control, s/n BN31028T w/ **LNS** Hydrobar Bar Feeder

MIYANO BNC-34T CNC Lathe, GE Fanuc Series O-T CNC Control, s/n BN3381TU w/ **LNS** Hydrobar Bar Feeder



2000
4-DIE, 4-BLOW
JERN YAO ENTERPRISES JBF-17B4S BOLT FORMER



VIDEO AVAILABLE



TANISAKA HARTFORD 10-400 THREAD ROLLER

2 AVAILABLE



1-DIE, 2-BLOW
NATIONAL MACHINERY 56 LONG STROKE COLD HEADER



VIDEO AVAILABLE



CITIZEN CINCOM L20 CNC LATHE

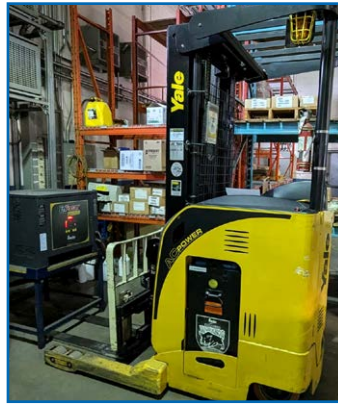
2 AVAILABLE



3 AVAILABLE
PARTIAL VIEW OF MIYANO CNC LATHES



YALE PROPANE FORKLIFT



YALE ELECTRIC REACH TRUCK



SORSYS INSPECTION MACHINE



PARTIAL VIEW OF HARDINGE TOOLROOM LATHES



NARDINI MS 1440 E LATHE



PARTIAL VIEW OF HOBGING PRESSES



KENT SGS-1020AHD SURFACE GRINDER



SUNNEN MBB-1660 HONE



PARTIAL VIEW OF PLANT SUPPORT



ROLLING STOCK

YALE GLC050LXNUAE087 Propane Forklift, 4,800lb Cap., 188" Max Lift, 3-Stage Mast, Side Shift, Cushion Tires, s/n A967V01752J

YALE NDR030DANM24TE095 Electric Reach Truck, 3,000lb Cap., 212" Max Lift, s/n A295N03725G w/ Battery Charger

PLANT SUPPORT EQUIPMENT

HARDINGE HLX-H Super Precision Toolroom Lathe

(2) **HARDINGE** DSM-59 Toolroom Lathes

HARDINGE TFB-H Toolroom Lathe

NARDINI MS 1440 E Lathe, 3-Jaw Chuck, Tool Post, Tailstock

PRESSVIT T150 4-Post Hobbing Press, s/n 200585

MODERN 4-Post Hobbing Press

KENT SGS-1020AHD Automatic Hydraulic Surface Grinder, 10" x 20" Magnetic Chuck

SORSYS Inspection Machine

SUNNEN MBB-1660 Precision Honing Machine w/ Tooling

GROB Vertical Bandsaw

PLUS: Milling Machines, Drill Presses, Arbour Presses, Pallet Racking, Bar Feeders, Warehouse Ladders, Chop Saws, Hardness Testers, Height Gauges, Granite Surface Plates, Pin & Block Gauge Sets, Precision Instruments, Machine Vises, Collets, Metal Cabinets, Optical Comparators, Digital Scales, Pallet Jacks, Hydraulic Bin Tipper, Wire Carousels, Workbenches, Sandblast Cabinet, Toolboxes, Power & Hand Tools, Metal Bins, Vibratory Bowl Feeders, Floor Sweeper, Office Equipment and Much More!

BidSpotter.com

TERMS OF SALE



Payment: All payments must be in Cash, Certified Funds, Wire Transfers, or Company Cheques, which must be accompanied with a bank letter guaranteeing irrevocable payment to Infinity Asset Solutions Inc. Invoices up to \$2,000 can be paid by Visa, Mastercard or Interac.

All bidders must register on Bidspotter by Monday October 7th, 5pm.

A 18% buyers premium will be added to all Online purchases.

A \$2,000 refundable security deposit is required upon online registration.

A 25% deposit is required at time of purchase, balance due by Wednesday October 9th, 2024, 4pm. NO EXCEPTIONS.

NOTE: EXCLUSIVE RIGGING MAY APPLY TO THIS AUCTION, PLEASE VISIT WWW.INFINITYASSETS.COM FOR DETAILS

All goods are sold "As Is, Where Is", ALL SALES ARE FINAL. All subject to prior sale. Complete terms and conditions including removal procedures, are available on our website.

REMOVAL TIMES

All items by Tuesday October 22nd. No Exception.

This brochure is meant merely as a guide. Infinity Asset Solutions makes no guarantee, expressed or implied, as to the accuracy of the information in this brochure. Buyers should inspect the goods beforehand to satisfy themselves.



AUCTIONS • LIQUIDATIONS • FINANCING • APPRAISALS

63 Maplecrete Road, Concord, Ontario L4K 1A5 Canada

infinityassets.com • Tel: (905) 669-8893