

PUBLIC AUCTION

COURT AUTHORIZED SALE

DELHI SOLAC
Steel Tubing

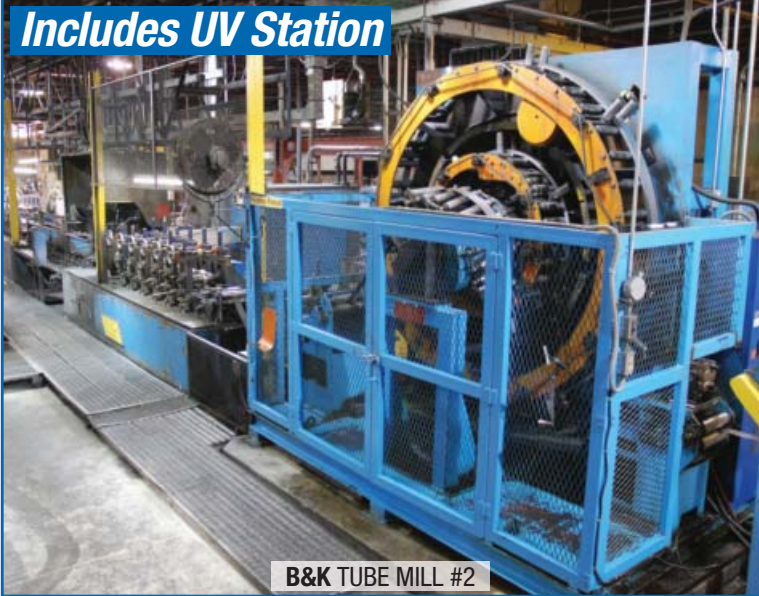


DELHI SOLAC

Steel Tube Manufacturing Facility

65 Waverly Street, Delhi (London), Ontario, Canada

Includes UV Station



B&K TUBE MILL #2

Large Qty of Mill Dies Available



B&K TUBE MILL #1

2003

1 of 3



Double Cut

DUTCH BEWO AUTOMATIC CIRCULAR SAW, MODEL DCH-70M



Over 1,400,000 lbs Available

PARTIAL VIEW OF FINISHED GOODS & RAW MATERIAL INVENTORY

Auction: Thursday May 8, 10:30 am ET

Inspection: Wednesday May 7, 9am-4pm ET

**Bid Live Onsite
& Online Via
Bidspotter.com**

INFINITY
Asset Solutions
infinityassets.com 905.669.8893

AUCTIONS • LIQUIDATIONS • FINANCING • APPRAISALS



Hilco Industrial

24 The East Mall, Unit #14
Toronto, ON, Canada M8W 4W5
Ph 416-252-1955 • Fx 416-251-1955

www.hilcoind.com

B&K TUBE MILL #2

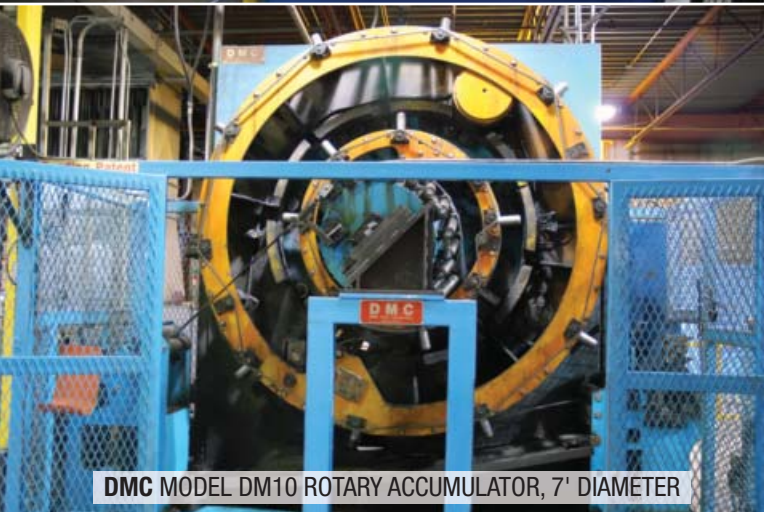
Please Visit Website For Complete Specifications & More Pictures Of Tube Mill



DMC FEEDER/BRAKE, MILLER 250DX WELDER



B & K TUBE MILL, MODEL 2TM 4 STATION FINISHING STAND



DMC MODEL DM10 ROTARY ACCUMULATOR, 7' DIAMETER



UNIVERSAL FINISHING SYSTEMS LACQUER LINE



UNIVERSAL FINISHING SYSTEMS INLINE UV CHAMBER MODEL SUPRA-CURE



SULZER METCO SEAM WELDER MODEL 350RU



B & K TUBE MILL, MODEL 2TM, 6 STAND



ALPHA FLYING CUT OFF PRESS, MODEL 70A/0200-DC



PARTIAL VIEW OF 100+ MILL TOOLING

B&K TUBE MILL #1

Please Visit Website For Complete Specifications & More Pictures Of Tube Mill



B & K TUBE MILL 6 STAND ROLLFORMER



SULZER METCO SEAM WELDER MODEL 350U



2 Available

DMC DUAL UNCOILER, APPROX 10,000 LB



B & K FINISHING TUBE MILL 4 STAND



FOUR POST FLYING CUT OFF PRESS



ROTARY SIZING STATION

FINISHED SIZE	Mill #1	Mill #2
Round: 5/8		✓
1/2 x 1/2		✓
Round: 11/16		✓
Round: 18mm		✓
0.75		✓
5/8 x 5/8		✓
Round: 7/8"		✓
3/4 x 3/4		✓
1/2 x 1		✓
0.995		✓
1	✓	✓
1.008		✓
13/16 x 13/16	✓	✓
Square: 0.605 x 1.225		✓
Round: 1-1/16		✓
5/8 x 1		✓
1.07	✓	
Round: 1-1/8		✓
7/8 x 7/8		✓
3/4 x 1		✓
1.25	✓	✓
1 x 1 RC	✓	✓
1 x 1 SC	✓	✓
1/2 x 1-1/2	✓	✓
Oval: 0.880 x 1.530	✓	✓
1-5/16	✓	✓
13/16 x 1-1/4	✓	
Flat Oval: .880 x 1.520	✓	
1.375	✓	
3/4 x 1-1/2	✓	✓
1 x 1-1/4		✓
1-1/8 x 1-1/8		✓
Ellipse: 0.880 x 1.910		✓
1.102 x 1.535		✓
5/8 x 1-5/8		✓
1.5	✓	✓
1-1/4 x 1-1/4 RC	✓	
1-1/4 x 1-1/4 SC	✓	✓
1 x 1-1/2	✓	✓
Flat Oval: 1-1/8 x 1-3/4	✓	✓
1.625	✓	✓
3/4 x 1-3/4	✓	
1.66	✓	✓
1-11/16	✓	✓
1.75	✓	✓
0.854 x 1.885	✓	
3/4 x 2	✓	
1.875	✓	✓
1.9	✓	✓
1-1/2 x 1-1/2 RC	✓	✓
1-1/2 x 1-1/2 SC	✓	✓
1 x 2	✓	
2 x 1	✓	
2	✓	✓
Round: 1.968	✓	
40 mm x 40 mm	✓	
1-1/4 x 2	✓	
Oval: 2"	✓	✓
1-3/8 x 2-3/8	✓	
2.25	✓	
1-3/4 x 1-3/4	✓	
1-1/2 x 2	✓	
1 x 2-1/2	✓	
Oval: 2-1/4	✓	
1-5/8 x 2-3/8	✓	
2.375	✓	✓
Oval: 2-3/8	✓	✓
2.5	✓	
2 x 2	✓	
1 x 3, 3 x 1	✓	
1-1/2 x 2-1/2	✓	
1-5/8 x 2-3/4	✓	
Oval: 1.6 x 3.2	✓	
3	✓	
Oval: 3"	✓	
2-1/2 x 2-1/2	✓	
2 x 3	✓	

Plus Huge Quantity of Tooling Available

2003



Double Cut

DUTCH BEWO AUTOMATIC CIRCULAR SAW, MODEL DCH-70M

2002



Double Cut

DUTCH BEWO AUTOMATIC CIRCULAR SAW, MODEL DCH-70M

2001



DUTCH BEWO AUTOMATIC CIRCULAR SAW, MODEL FCH-85-M

AUTOMATIC SAWS

2003 **DUTCH BEWO** Saw model DCH-70M automatic circular, double cut, capacities: Tube: 2x dia .59" – 2x dia 2.75", Square: 2x .59" x .59" – sx 1.97" x 1.97", Rectangular: 2x .78" x .59" – 1.97"x1.57", saw blade diameter 12.4" – 13.8", min product length 1.18", min head length .59", pinholes diameter (pitch) 4 holes of .43" at 2.48" from heart, feed table max length of initial product 275.6", stock feeded bundle diameter 19.68", Lauer digital controller, Auto loader, 3/60/400 volts, 2003 Dutch Saws model DB90 unloader, deburring brushes & cart, chip conveyor, sn: 0310940

2002 **DUTCH BEWO** Saw model DCH-70M cut-to-length saw, double cut, capacities: Tube: 2x dia .59" – 2x dia 2.75", Square: 2x .59" x .59" – 2x 1.97" x 1.97", Rectangular: 2x .78" x .59" – 1.97"x1.57", saw blade diameter 12.4" – 13.8", min product length 1.18", min head length .59", pinholes diameter (pitch) 4 holes of .43" at 2.48" from heart, feed table max length of initial product 275.6", stock feeded bundle diameter 19.68", Lauer model PCS 095 topline mini digital controller, 3/60/400 volts, 2002 Dutch Saws model DB 90 unloader, deburring brushes & cart, Chip Conveyor, sn: 0210849

2001 **DUTCH BEWO** Saw model FCH-85-M cut-to-length saw, single cut, capacities: Round Pipe: .31" – 3.54", Round Solid: 1.38", Square: .39" – 3.15", Right Angle Pipe Max: 2.36" x 3.35", saw blade diameter 6.29" – 13.78", 288" capacity auto loading system, Siemens model Simatic OP7 digital read-out controller, 3/60/575 volts, hydraulic, 2001 Dutch Saws model DB 76 unloader, deburring brushes, saw sn: 0014816.

2000 **DUTCH BEWO** model MT-4000 measuring system, Magnescale model LT30 digital read-out meter, 14' long capacity bed, 110V, sn 0014233

Each saw equipped with **TORIT** 84CAB dust collector and portable scissor lift / out feed tables.

Assorted spare parts for Dutch Saws

2000



DUTCH BEWO MEASURING SYSTEM, MODEL MT-4000

AUCTIONEER'S NOTE:

Please visit infinityassets.com and hilcoind.com for complete specifications and additional photos of complete mills and other featured items.

PARTIAL VIEW OF FINISHED GOODS & RAW MATERIAL INVENTORY – OVER 1,400,000 LBS AVAILABLE!

Complete Inventory Specifications Available At infinityassets.com And hilcoind.com



LACQUER LINE

Complete Lacquer Line: six arm flipper auto infeed, (6) gravity roller skate conveyor, manual controls, wash system 4'x8'x4' supply tank, open top with lids, pumps, (2) paper filters, 16' long enclosed spray wash chamber, (6) gun lacquer spray guns, booth, Graco barrel pump, hoses, valves, etc., roller out feed conveyor system, 25'x6" power belt out-feed conveyor, 8'x30' accumulation table, Despatch push button central control panel, (3) Leeson adjustable speed controls, AC Tech control, Fromm model CE90 pneumatic strapping machine, sn: 0100172, overhead rail, beam trolley, balance

PRESSURE SYSTEMS Company model G40 natural gas pressure washer, (2) heaters, sn: 8882; 8882, one pump, piping, water softener system, etc.

B&K SLITTING LINE

B & K model 10R coiler reel, 12,000 lbs capacity, 30 HP electric motor, sn: 104, B & K model 3S slitter, 36" wide capacity, 10 HP, 1800 rpm, 1.1 ratio, 14 gauge capacity, Max Cutter Space 40, Max Cutter Dia 10.5", Min Cutter Dia 8.5", Max Capacity 14 Gauge, # Cuts in Max Gauge - Approx. 8, Spindle Keyway 1", Spindle Dia 5", Base to Bottom of Spindle 9", sn: 100, Plus 5 HP Trim Offcut Chopper, & **B & K** model 10U recoiler 30 HP, 1765 rpm, 12,000 lbs capacity, Max Drum Diameter 20.5", Min Drum Dia 14.5", Max coil dia 60", max coil width 36", max coil weight 12,000 lb, sn: 115, dyna wichita unit # 7-314-210-108-0 Air Tube Disc Unit, sn 193931-01, assorted spacers, knives, coil side plates & spare parts

AUTO SWAGER / TUBE FORMING

Auto Swager Line: 14' long gravity in-feed system, dual head roll end feeder unit, swager system, 20' long capacity, system controls, 50 HP hydraulic, four cylinder clamping system, push button controls, 30 HP hydraulic

1999 **EAGLE** Eaton Leonard model C-2000 tube swager, 4.5" Die Opening, 10 HP, 3/60/460 volts, sn: 553696, Plus Spare Dies

LOOPCO dual head 10' capacity open flaring unit, dies & push button controls

TUBE DEBURRING

Dual head end deburring machine, four station 12' wide adjustable capacity chain drive feed system

Bid Live ONSITE or ONLINE at

BidSpotter.com[®]



COMPLETE LACQUER LINE



PRESSURE SYSTEMS PRESSURE WASHER, MODEL G40



B & K SLITTER, MODEL 3S, 36" CAPACITY



AUTO SWAGER LINE



LOOPCO DUAL HEAD FLARING UNIT, 10' CAPACITY



ROBONEX HYDRA SHEAR, MODEL SST-0150-5.50-1



DUAL HEAD DEBURRING MACHINE, 12' ADJUSTABLE CAPACITY



EAGLE SWAGER, MODEL C-2000

TUBE SHEAR

ROBONEX Model SST-0150-5.50-1 Hydra Shear, 25 HP Hydraulic cut-off shear, sn 901178, Part # 20341200

TOOLROOM

BRIDGEPORT Mill, 9"x42", Power X, Mitutoyo 2 axis DRO, sn J102840

VDF 20" x 60" engine lathe, 2.5" bore, four jaw chuck, quick change tool post

CINCINNATI 3' radial arm drill, 20" x 20" box table

CINCINNATI universal mill, 10"x52" Table, **CHICAGO** model 338SP 8' x 35 Ton press brake, sn: L6947

CHICAGO model BB-2 metal brake, 24", sn: 110049

BROWN BOGGS 48" capacity pneumatic shear

TOS 8" x 20" surface grinder

DAKE model 5 ton shop press, 32" between frames, sn: 144506

GROB model NS18 vertical bandsaw, 54" blade, blade welder, tilting table, 18" throat, sn: 8154

DI-ARCO model 2A hand rolls

CARBOLOY & Delta double pedestal grinders

PROGRESS model 3 pedestal drill press, sn: 1792461474

Bench type drill press, buffer & table

RIDGID model 200 pipe threader, assorted dies

H. SCHUMACHER model 150 saw

ROCKWELL model 3JS hardness tester, sn: 3480

BROWN BOGGS model 17 1/2 J OBI press, 60 Ton, air clutch, safety curtain, sn: 11468

SCM model T-120 single spindle shaper
Up stroke cut-off saw, conveyor, dust collector

FORKLIFTS

HYSTER 9,600 lb capacity, model S120XM forklift, three stage mast, 60" forks, 163" lift, side shift, approx 5,200 hrs, sn: F004V03292C

HYSTER 5,000 lb capacity, model S60FT forklift, side shift, three stage mast, 181" lift, sn: F187V16735H

CATERPILLAR 5,500 lb Capacity, model C5000 forklift, side shift, 188" lift, three stage mast, sn: AT9004082 with 2002 Cascade Fork Positioner, Model 55D-FPS-SP, sn 1C-SP-11754-T1

HYSTER 4,000 lb capacity, model S50FT forklift, side shift, two stage mast, 129" lift, sn: F187V13657F (Note: Forklift carriage not on), Plus Cascade fork positioner model 55D-FPS-03A, 5,500 Cap, sn 1C-SP-11440-T1

(2) **CASCADE** Fork Positioners, Model 70D-FPS-03A, 7,000 lb capacity, sn 1C-SP-11441-T1

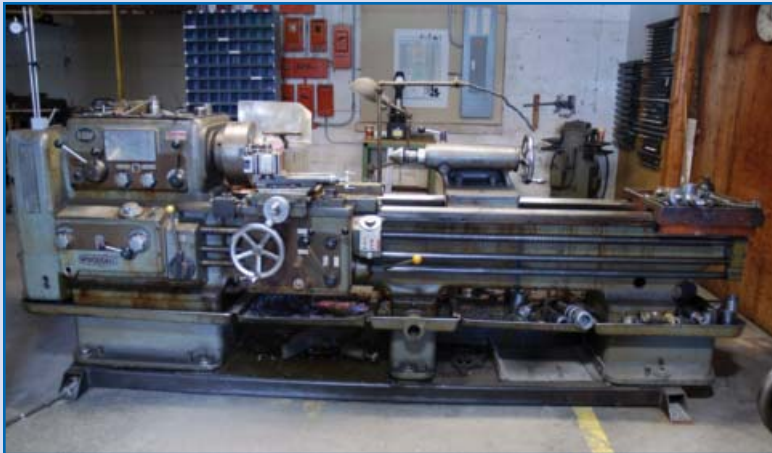
HYDRAUX Forklift Forks & Extensions: 100", 84", 72", 60"



CHICAGO 8' X 35 TON PRESS BRAKE



BROWN BOGGS 48" SHEAR



VDF 20" X 60" LATHE



BROWN BOGGS 60 TON OBI PRESS



CINCINNATI UNIVERSAL MILL



KLETON 1/4 TON PORTABLE CRANE



**PENTALIFT
50,000 LB
CAP. DOCK
PLATE
LEVELER**



**10,000 LB CAP
UPENDER**



SCM SPINDLE SHAPER, MODEL T-120



PARTIAL VIEW OF STORES INVENTORY

CRANES – MATERIAL HANDLING

12' x 1,000 lb Jib Crane, floor mounted, 12" Vertical, 12' Jib arm

TRANSCRANE 3 ton capacity free standing jib crane, 12' long arm

KLETON 1/4 ton capacity portable A frame, CM 1/4 ton chain fall

10,000 lbs capacity electric bundle upender, 5'x5' Bed

(2) **HERCULES** model CHV 10-10-26 lifting hook, 10,000 lb capacity, sn 7030457

2004 **BISON** model C-1010-30 lifting hook, 10,000 lb capacity, stand, sn 008245

3 - 5,000 lbs capacity coil lifting hook

VULCAN 2 ton electric chainfall, trolley

PENTALIFT 50,000 lb Cap. Dock Plate Leveler Model HD 6850, sn 360060796

5' x 9' platform electric scissor lift

(13) Adjustable pipe transportation carts

(3) 36" x 48" & 60" x 72" aluminum dock plates

(15) Plastic lined liquid storage shipping containers

AIR COMPRESSORS

2004 **INGERSOLL RAND** model IRN75H-CC rotary air screw compressor, 145 psi, 75 HP, 3/60/575 volts, sn: NV6668U04299

COMPAIR model 148K08-108 hydrovane air compressor, 30 HP, 35,522 hours, sn: 87114HV649801/2

2002 **INGERSOLL RAND** model TMS 0540 air line dryer, 232 max air pressure, sn: 42529040

Air receiver tank, inline filter, air line piping,

BEKO model Owamat 5R oil separator,

HAUCK 7.5 HP heat blower system

STORES & MISC.

Bearings, gloves, tooling, mag drills, cylinders, weld heaters, mill parts, deburr parts, ladders, new tool carts, welding wire, nailers, chop saws, pallet racking, assorted parts, forklift boom, parts for tube mills, hydraulic power packs, cut-off machine, tool cabinets, arbor press, (20) steel banding dispensers, (47) rolls

of steel banding,

(4) signode hand

operated banding

units, (8) air king

fans, pallet spill

kits, (31) 45 gallon

drums, barrel dolly

& barrel pump, (32)

steel stacking bins,

pipe carts, (2) floor

cleaners, (100+)

wood pallets, Etc.



HYSTER 9,600 LB CAP. FORKLIFT, MODEL S120XM



1 of 2

HYSTER 5,000 LB CAP. FORKLIFT, MODEL S60FT



1 of 2

OBRIEN 5 TON JIB CRANE, 15'



2004

INGERSOLL RAND 75 HP AIR COMPRESSOR

OFFICE

Complete office furniture, equipment, cubicles, offices, computers, **DATAMAX** I class label printers, server room, phone system, filing, CMI model 2000 series digital read-out time clock, card holding trays, lunchroom, reception, etc.

PROXY BIDDING:

We will be happy to bid on your behalf if you are unable to attend our auction. Please call our office at 1-866-669-8893, or visit infinityassets.com to submit a proxy bid.

TERMS OF SALE



Payment: All payments must be in Cash, Certified Funds, Wire Transfers, or Company Checks, which must be accompanied with a bank letter guaranteeing irrevocable payment to Infinity Asset Solutions Inc. Invoices up to \$2,000 can be paid by Visa, Mastercard or Interac.

All Online bidders must register on Bidspotter by 5pm Wednesday May 7th.

A 15% buyers premium will be added to all onsite purchases (18% Online).

A \$500 refundable security deposit is required upon onsite registration (\$2,000 Online).

A 25% deposit is required at time of purchase, balance due by 4pm Friday May 9th 2014. **NO EXCEPTIONS.**

All goods are sold "As Is, Where Is", **ALL SALES ARE FINAL.** All subject to prior sale. Complete terms and conditions including removal procedures, are available on our website, will be posted at the auction and will be provided at the time of registration.

This brochure is meant merely as a guide. Infinity Asset Solutions and Hilco Industrial make no guarantee, expressed or implied, as to the accuracy of the information in this brochure. Buyers should inspect the goods beforehand to satisfy themselves.

REMOVAL TIMES

All small items Friday May 16th. 2 Mills & Inventory – Friday May 23rd.

Hours: Monday – Friday between 8 am – 4 pm. No items may be removed during auction. **NO EXCEPTIONS.**

DIRECTIONS: From Toronto Airport To: 65 Waverly St. Delhi, Ontario, N4B1E8. Approx: 146 km, 1 hr, 45 mins

Follow signs to 427 S, Follow to Queen Elizabeth Way and 403 W, follow signs for Hamilton/Brantford, Take exit 27 for 24 S/Rest Acres Road S, follow 24 S and Regional Rd 4 to Waverly St in Delhi, Slight right onto Vanessa Rd/County Rd 4, Continue onto Brantford Rd/Regional Rd 4, Turn right onto Church St E/Regional Rd 4, Turn left onto James St, Turn left onto Waverly St, Destination will be on the left.

Member In Good Standing Of:



INDUSTRIAL AUCTIONEERS ASSOCIATION



INFINITY
Asset Solutions
infinityassets.com 905.669.8893

AUCTIONS • LIQUIDATIONS • FINANCING • APPRAISALS

Hilco Industrial
24 The East Mall, Unit #14
Toronto, ON, Canada M8W 4W5
Ph 416-252-1955 • Fx 416-251-1955
www.hilcoind.com