

# ONLINE AUCTION

Due to Owner Retiring

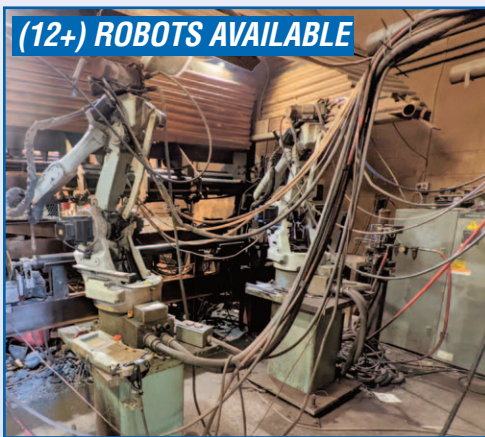
## Innovative PC Designs

*Manufacturer of Adjustable Steel Columns*

450 Bowes Road, Unit 10, Concord, ON



PARTIAL VIEW OF **DAEWOO** CNC LATHES



PARTIAL VIEW OF **MOTOMAN** WELDING ROBOTS AND PRODUCT CELLS



**GEKA** HYDRACROP 50/SD IRONWORKER



PARTIAL VIEW OF **HYSTER, CLARK, KALMAR** FORKLIFTS

**CLOSES: Wednesday August 17<sup>th</sup>, 11:00 AM (ET)**

**Inspection: Tuesday August 16<sup>th</sup>, 9 AM to 4 PM or By Appointment**



**INFINITY**  
Asset Solutions

- AUCTIONS
- LIQUIDATIONS
- FINANCING
- APPRAISALS

**905.669.8893**

[infinityassets.com](http://infinityassets.com)

**BidSpotter.com**



**DAEWOO PUMA 7 CNC LATHE**

## CNC LATHES

1997 **DAEWOO** 12LC CNC Lathe with 12" Chuck, Max Turning Diameter: 19.0", Max Turning Length: 40.2", Max Bar Capacity: 4.62", Swing Over Bed: 22.4", Distance Between Centers: 42.0", X Axis Travel: 10.2", Z Axis Travel: 41.3", Rapid Traverse X Axis: 480 IPM, Rapid Traverse Z Axis: 630 IPM, Spindle Bore: 5.20", 20 – 2000 RPM, 35 HP, s/n PL-12 1193

1996 **DAEWOO** PUMA 8 CNC Lathe with Collet Chuck, with Max Turning Diameter: 14.6", Max Turning Length: 20.7", Bar Capacity: 2.05", Swing Over Bed: 19.7", Distance Between Centers: 21.9", Travels: X-8.3", Z-21.7", Rapid Traverse X Axis-630 IPM, Rapid Traverse Z Axis-787 IPM, 4,000 RPM s/n 0605

**SMW SPACESAVER** 2000 Barfeed machine, 3.125" x 5.5Ft Cap.

(2) **CNC ENHANCEMENTS** AUTOBAR AB-400, Magazine Type Automatic Bar Feed with 1/4" to 4" Dia. Cap., 60" max. length

## WELDING ROBOTS & PRODUCT CELLS

**MOTOMAN** K6, 6 AXES Welding Robot w/ HOBART Welder/Feeder w/ MCR Controls, 6KG Payload, H-Reach: 1322mm, Repeatability: ±0.1mm, Robot Mass: 180kg, Structure: Articulated, Set up w/ 48" Powered Rotary Table, 60" KIOKE Aronson Motorized Rotary Table, 2x 30" x 72" Hydraulic Rotary Table

**MOTOMAN** Robot w/ MRC II S Control w/ 18" Motorized Rotary Table, Hobart 450 MIG Welder

(3) **MOTOMAN** K6SB 6 AXES Welding Robots w/ ECR Controls, 6KG Payload, H-Reach: 1322mm, Repeatability: ±0.1mm, Robot Mass: 180kg, Structure: Articulated

(2) **MOTOMAN** UP6 6 AXES Welding Robots w/ MILLER Robots/Feeders, MRC Controls, 6KG Payload, H-Reach: 1373mm, Repeatability: ±0.08mm, Robot Mass: 130kg, Structure: Articulated

**MOTOMAN** SV3X 6 AXES Robot w/ Yasnac XRCSC3X Control, Attached Rotary Chuck to make Threads, 3KG Payload, H-Reach: 677mm, Repeatability: ±0.03mm, Robot Mass: 30kg

(4) **MOTOMAN** Various model welding robots

## FACTORY SUPPORT EQUIPMENT

**GEKA** HYDRACROP 50/SD Hydraulic Iron Worker with 55 TON Punch Cap., (1-1/8" thru 1/2"), Throat - 20", Angle Shear - 4" x 4" x 1/2", Plate Shear - 12" x 5/8" or 8" x 3/4", Notcher - 1-5/8" x 3-1/2" x 3/8", Bar Shear 1-9/16" Round / Square, s/n 8071



**(12+) ROBOTS AVAILABLE**



PARTIAL VIEW OF **MOTOMAN** WELDING ROBOTS AND PRODUCT CELLS



**HYD-MECH** S-20P SEMI-AUTO BANDSAW



**MAXIMART** 4VS-8 VERTICAL MILL



**BRIDGEPORT** 815 SURFACE GRINDER

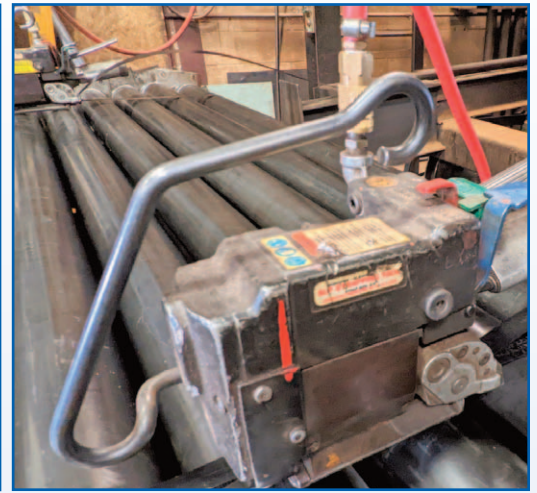


**(4+) COMPRESSORS AVAILABLE**

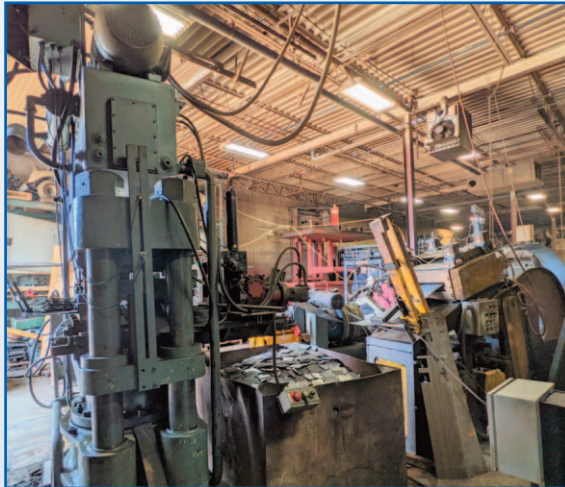
**INGERSOLL-RAND COMPRESSOR**



**DIPPING TANK**



**FULLY AUTO STRAPPING MACHINES**



**PARTIAL VIEW OF PRESSES, FEEDERS, ETC.**



**GMC C-7500 FLATBED TRUCK**

**HYD-MECH S-20P** Semi-Auto Bandsaw with 13”H x 18”W capacity at 90°, 3 HP motor, and 1” blade  
**MAXIMART 4VS-8** Mill w/ 3 Axis DRO, Powerfeed, 40 Taper, 5HP  
**BRIDGEPORT 815** Manual Surface Grinder  
(4) **CHAMPION & HYDROVANE** Compressors up to 30HP  
**ATLAS COPCO** Refrigerated Air Dryer

**DANIELS EST.** 100 Ton 4 Post Hydraulic Press  
**WHITNEY** 90 Ton Hydraulic Press  
**500 OILGEAR** 4 Post Hydraulic Press w/ Feeder  
**380 Ton Hydraulic Press w/ FeedSystem**  
<https://www.youtube.com/watch?v=ygyyXHetXyE>  
Dipping Tank w/ Pneumatic Lift and Fire Suppression  
**MATERIAL HANDLING**  
**CLARK** 3,500lb Electric Forklift, 3 Wheel

**HYSTER** 7,800lb Electric Forklift  
**KALMAR** 8,000lb Electric Forklift  
**HYSTER** 6,000lb LPG Forklift  
**GMC** Flatbed Truck, C-7500  
**ALSO:** Welding Fixtures, Rotary Tables, Pneumatic Chucks, Scissor Lifts, Smog Hogs, Tooling, Racking, Spare Parts, Accessories, Hand Tools, Torches, etc.

## TERMS OF SALE



**Payment:** All payments must be in Cash, Certified Funds, Wire Transfers, or Company Cheques, which must be accompanied with a bank letter guaranteeing irrevocable payment to Infinity Asset Solutions Inc. Invoices up to \$2,000 can be paid by Visa, Mastercard or Interac.

All bidders must register on Bidspotter by Tuesday August 16th, 5pm. A 18% buyers premium will be added to all Online purchases. A \$2,000 refundable security deposit is required upon online registration. A 25% deposit is required at time of purchase, balance due by Thursday August 18, 2022, 4pm. **NO EXCEPTIONS.**

All goods are sold “As Is, Where Is”, ALL SALES ARE FINAL. All subject to prior sale. Complete terms and conditions including removal procedures, are available on our website.

## REMOVAL TIMES

All items by Friday August 26th, 2022.

*This brochure is meant merely as a guide. Canam-Appraiz Inc. and Infinity Asset Solutions make no guarantee, expressed or implied, as to the accuracy of the information in this brochure. Buyers should inspect the goods beforehand to satisfy themselves.*



**AUCTIONS • LIQUIDATIONS • FINANCING • APPRAISALS**

63 Maplecrete Road, Concord, Ontario L4K 1A5 Canada

**infinityassets.com • Tel: (905) 669-8893**