

ONLINE AUCTION

Due to Owner Retiring

Mikes
**INDUSTRIAL
SUPPLY**
Div. of 2203203 Ontario Limited

HMT
HUNTSVILLE MACHINE & TOOL
Machining, Welding & Steel Sales

Machining & Fabrication Shop and Industrial Supply Store



VIDEO AVAILABLE

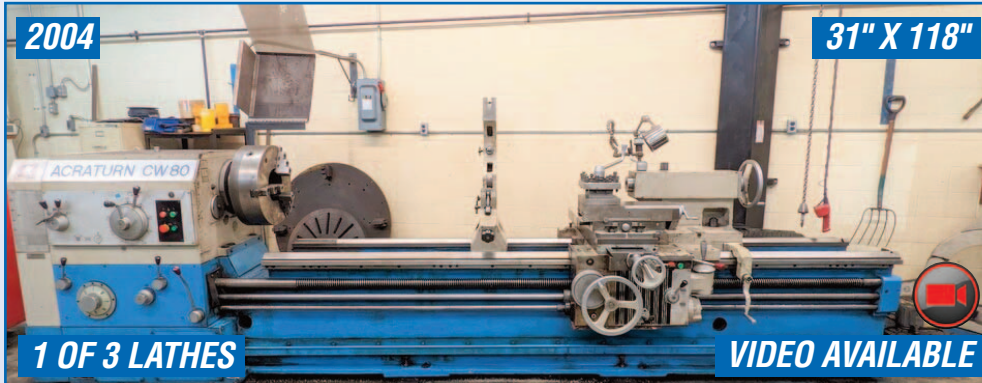
KOMATSU WA180-1 LOADER



12" X 24"

VIDEO AVAILABLE

PROTH PSGS-3060AH AUTO HYD. SURFACE GRINDER



2004

31" X 118"

1 OF 3 LATHES

VIDEO AVAILABLE

ACRATURN CW6280C LATHE



PARTIAL VIEW OF RETAIL STORE

Location: 200 Falcon Road, Huntsville, Ontario

CLOSES: Thursday June 23rd, 11:00 AM (ET)

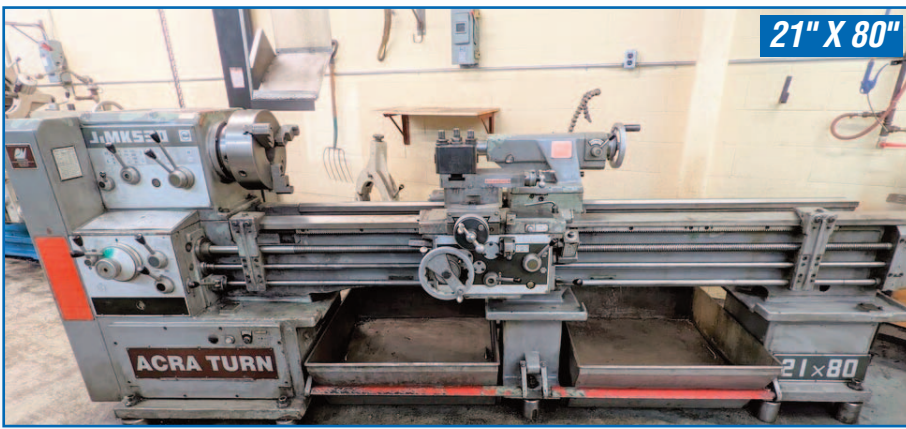
Inspection: Wednesday June 22nd, 9AM – 4PM or By Appointment Only

 **INFINITY**
Asset Solutions

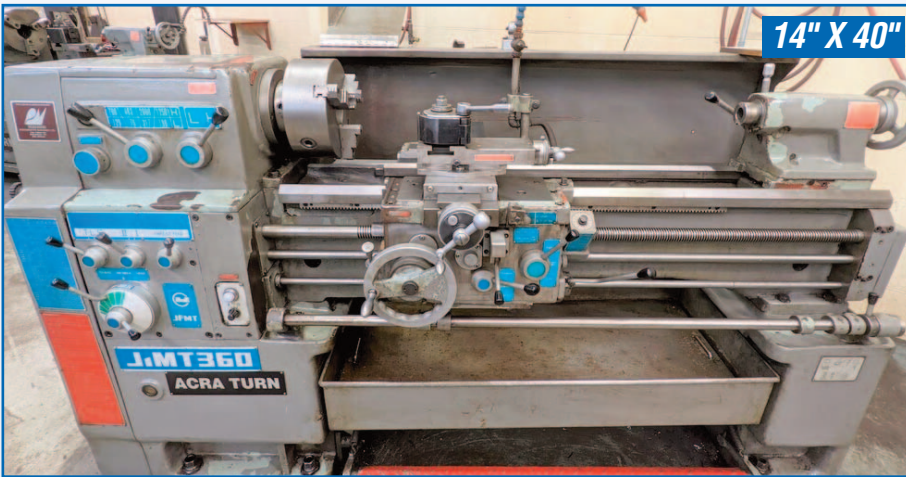
- AUCTIONS
- LIQUIDATIONS
- FINANCING
- APPRAISALS

905.669.8893
infinityassets.com

BidSpotter.com



ACRATURN JIMK530X2000 LATHE



ACRATURN JIMT360X1000 LATHE



LUCAS MACHINE NO. 31 BORING MILL



MAXIMART S-3VS VERTICAL MILL



KITCHEN & WADE 36E26 RADIAL DRILL

Visit infinityassets.com for complete specs, additional photos and videos of machinery in operation



KEARNEY & TRECKER 10HP-4CH VERTICAL MILL



JELSINGRAD (DARBERT) HYDRAULIC SHEAR

KOMATSU WA180-1 Loader, Fork Bucket & Snow Plow Attachments, Approx. 4,300hrs, s/n A75261

2004 ACRATURN CW6280C Lathe, 31.5" x 118.11", 20" 3 & 19" 4-Jaw Chucks, 5" Bore, Steady Rests, Tailstock, Tool Post, s/n LG1061

ACRATURN JIMK530X2000 Lathe, 21" x 80", 13" 3 & 15" 4-Jaw Chucks, 3" Bore, Steady Rests, Tailstock, Tool Post, s/n K6119380

ACRATURN JIMT360X1000 Lathe, 14" x 40", 10" 3-Jaw Chuck, 1.5" Bore, Tailstock, Tool Post, s/n T6049074

MAXIMART S-3VS Vertical Milling Machine, Fagor 2-Axis DRO, 10" x 50" Table, Power Feed, 3HP, s/n 971287 w/ Bridgeport Shaping Attachment

BRIDGEPORT 145054 Vertical Milling Machine 9" x 42" Table, 1.5HP, Speeds to 4,200 RPM, s/n J149496

KEARNEY & TRECKER 10HP-4CH Vertical Milling Machine, 16" x 74" Table, Speeds to 1,500 RPM, s/n 21-6721

PROTH PSGS-3060AH Automatic Hydraulic Surface Grinder, 12" x 24" Magnetic Chuck, s/n 90507-04

LUCAS MACHINE No. 31 Horizontal Boring Mill, 34" x 48" Table w/ Arbor Support & Tooling

JELSINGRAD (DARBERT) Hydraulic Shear, 10' x 1/4" Cap., Back Gauge

KITCHEN & WADE 36E26 Radial Arm Drill, 4' Arm, s/n 17963 w/ Box Table



DAVIS NO. 4 KEYSEATER



1 OF 2 BANDSAWS

ACRA UE-918VSA HORIZONTAL BANDSAW



4,950LB CAP.

HYSTER S50XM PROPANE FORKLIFT



PARTIAL VIEW OF WELDERS



WALL MOUNTED JIB CRANE

1 OF 3



5HP

RK MACHINERY COMPRESSOR



Visit infinityassets.com for complete specs, additional photos and videos of machinery in operation

PEDDINGHAUS MODEL 210 SUPER 11 IRONWORKER

PEDDINGHAUS Model 210 SUPER 11 Ironworker, s/n 4400457374099, 44 Short Ton Cap.

DAVIS No. 4 Keyseater

2004 ACRA UE-918VSA Horizontal Bandsaw, 9" x 18" Cutting Cap., s/n 04075085

LETEN DCM-5 Vertical Bandsaw w/ Blade Welder

MILLER Syncrowave 180 SD CC-AC/DC Squarewave Welding Power Source

MILLER CST 250 Welder

LINCOLN ELECTRIC Weld-Pak 155 Welder

LINCOLN ELECTRIC Wire-Matic 255 Welder

THERMAL DYNAMICS Cut Master 50 Plasma Cutter

MILLER Millermatic 252 Welder

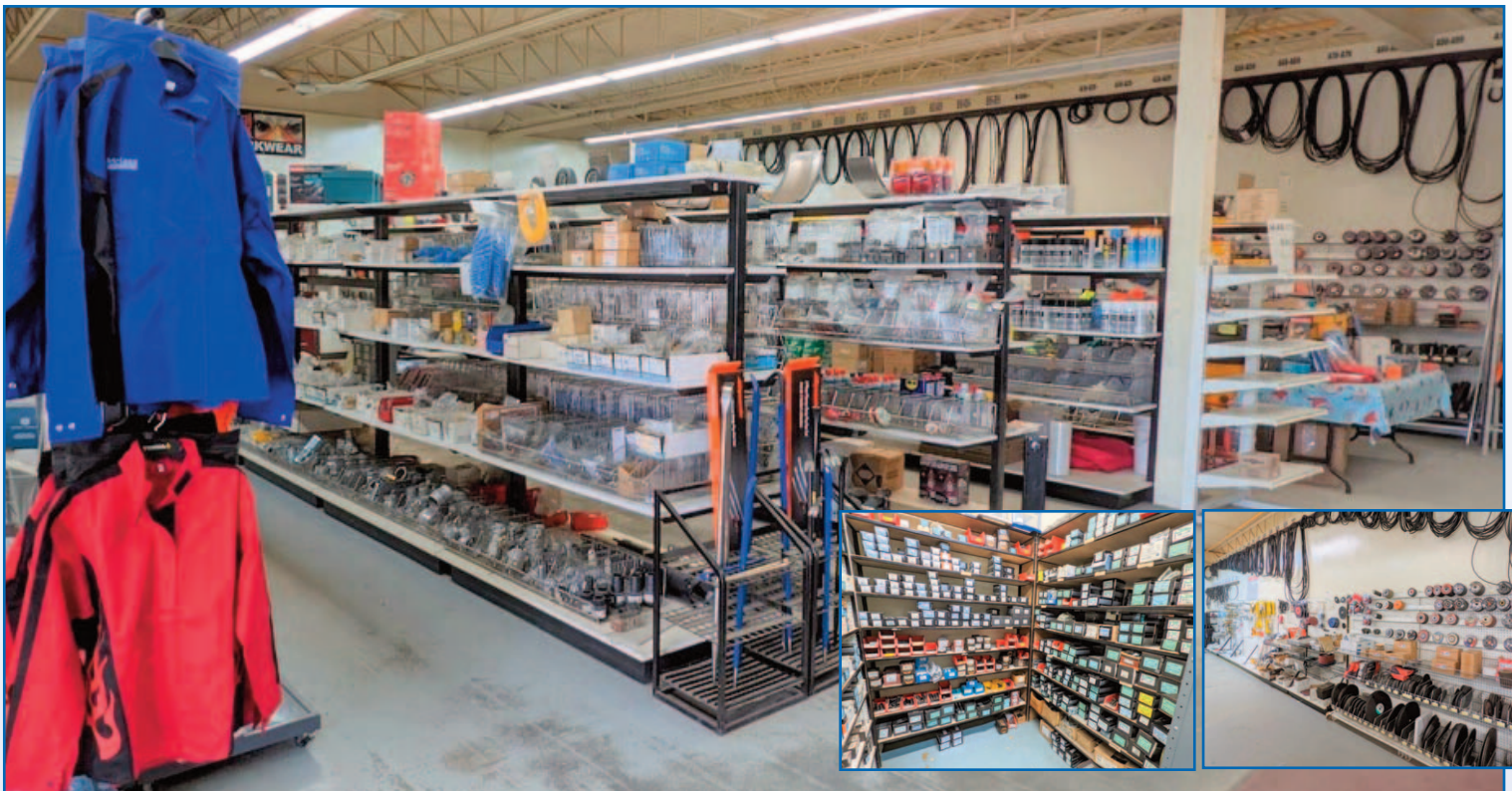
MILLER Millermatic 350 Welder

HYSTER S50XM Propane Forklift, s/n D187V06440U, 4,950lb cap., 189" Max Lift, 3-Stage Mast, Side Shift, Solid Tires

(3) Wall Mounted Jib Cranes w/ Hoists

RK MACHINERY Piston Type Air Compressor, 5HP

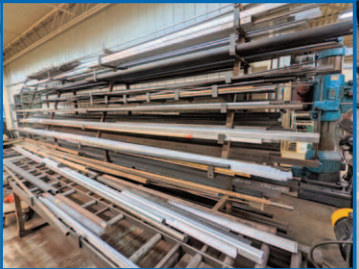
Bid ONLINE at **BidSpotter**



RETAIL STORE INCLUDING: HYDRAULIC/PNEUMATIC FITTINGS & HOSE, HARDWARE, POWER & HAND TOOLS, THREADED ROD, BELTS, GRINDING & CUTTING WHEELS, RIGGING STRAPS & TIE DOWNS, SAFETY & CLEANING SUPPLIES, CASTORS, TRAILER HITCHES & ATTACHMENTS, ETC.



PLUS: LARGE QTY. OF METAL STOCK, TUBE, BAR, ANGLE IRON, PLATE, PALLET RACKING, LADDERS, POWER & HAND TOOLS, WELDING SUPPLIES, PALLET JACK, MAG DRILLS, PEDESTAL GRINDERS, TOOL CUTTER GRINDERS, TORCH CARTS, SHOP PRESS, STRAP-PING CARTS, SHOP CARTS, TOOLBOXES, DRILL PRESS, ROTARY TABLES, PRECISION INSTRUMENTS, DRILL BITS, END MILLS, REAMERS,



MICROMETERS, VERNIERS, HEIGHT GAUGES, TOOL HOLDERS, STANLEY VIDMAR CABINET, GRANITE SURFACE PLATE, VISES, WAREHOUSE FANS, HYDRAULIC & PNEUMATIC FITTINGS, HYDRAULIC HOSE, METAL SHELVING AND MUCH MORE!

TERMS OF SALE



Payment: All payments must be in Cash, Certified Funds, Wire Transfers, or Company Cheques, which must be accompanied with a bank letter guaranteeing irrevocable payment to Infinity Asset Solutions Inc. Invoices up to \$2,000 can be paid by Visa, Mastercard or Interac.

All bidders must register on Bidspotter by Wednesday June 22, 5pm.

A 18% buyers premium will be added to all Online purchases.

A \$2,000 refundable security deposit is required upon online registration.

A 25% deposit is required at time of purchase, balance due by Friday May 6th, 2022, 4pm. NO EXCEPTIONS.

All goods are sold "As Is, Where Is", ALL SALES ARE FINAL. All subject to prior sale. Complete terms and conditions including removal procedures, are available on our website.

REMOVAL TIMES

All items by Thursday June 30th, 2022.

This brochure is meant merely as a guide. Infinity Asset Solutions makes no guarantee, expressed or implied, as to the accuracy of the information in this brochure. Buyers should inspect the goods beforehand to satisfy themselves.



AUCTIONS • LIQUIDATIONS • FINANCING • APPRAISALS

63 Maplecrete Road, Concord, Ontario L4K 1A5 Canada

infinityassets.com • Tel: (905) 669-8893